

LOWER GROUND FLOOR

Total Floor Capacity: 1.480 m² / 1.770 yd²

OLYMPIA PLENARY ROOM

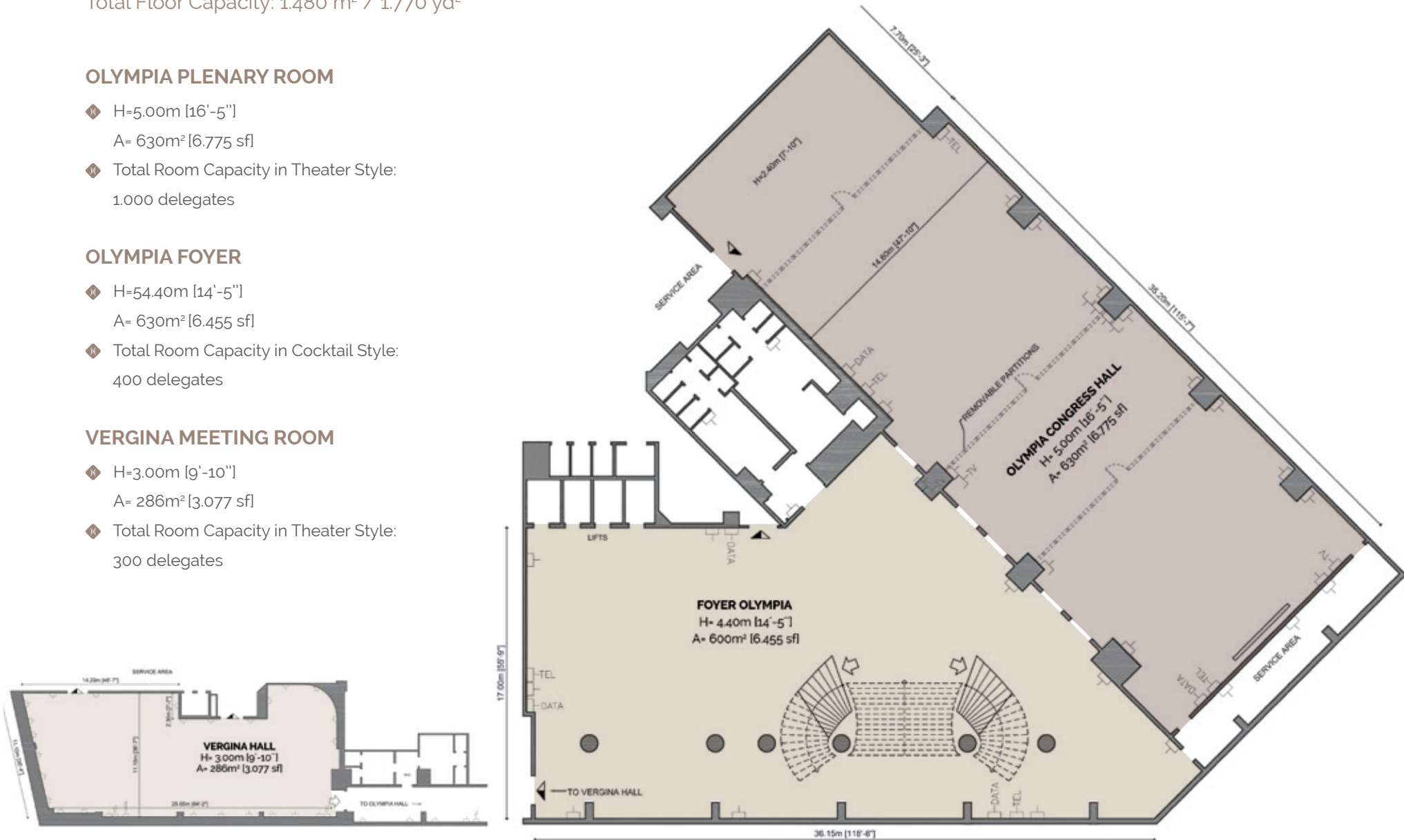
- H=5.00m [16'-5"]
- A= 630m² [6.775 sf]
- Total Room Capacity in Theater Style: 1.000 delegates

OLYMPIA FOYER

- H=54.40m [14'-5"]
- A= 630m² [6.455 sf]
- Total Room Capacity in Cocktail Style: 400 delegates

VERGINA MEETING ROOM

- H=3.00m [9'-10"]
- A= 286m² [3.077 sf]
- Total Room Capacity in Theater Style: 300 delegates



GROUND FLOOR

Total Floor Capacity: 704 m² / 842 yd²

ILISSOS FOYER

- H=54.40m [14'-5"]
- A= 630m² [6.455 sf]
- Total Room Capacity in Cocktail Style: 300 delegates

ILISSOS MEETING ROOM

- H=5.00m [16'-5"]
- A= 630m² [6.775 sf]
- Total Room Capacity in Theater Style: 500 delegates



MEZZANINE FLOOR

Total Floor Capacity: 2.120 m² / 2.535 yd²

MACEDONIA 1

- H=3.00m [9'-10"]
- A= 207m² [2.227 sf]
- Total Room Capacity in Cocktail Style: 200 delegates

MACEDONIA FOYER

- H=3.00m [9'-10"]
- A= 370m² [3.981 sf]
- Total Room Capacity in Cocktail Style: 400 delegates

NAOUSSA | EDESSA | KOZANI

- H=3.00m [9'-10"]
- A= 61m² [656 sf]
- Total Room Capacity in Cocktail Style: 40 delegates

MACEDONIA 2

- H=3.00m [9'-10"]
- A= 216m² [2.324 sf]
- Total Room Capacity in Cocktail Style: 200 delegates

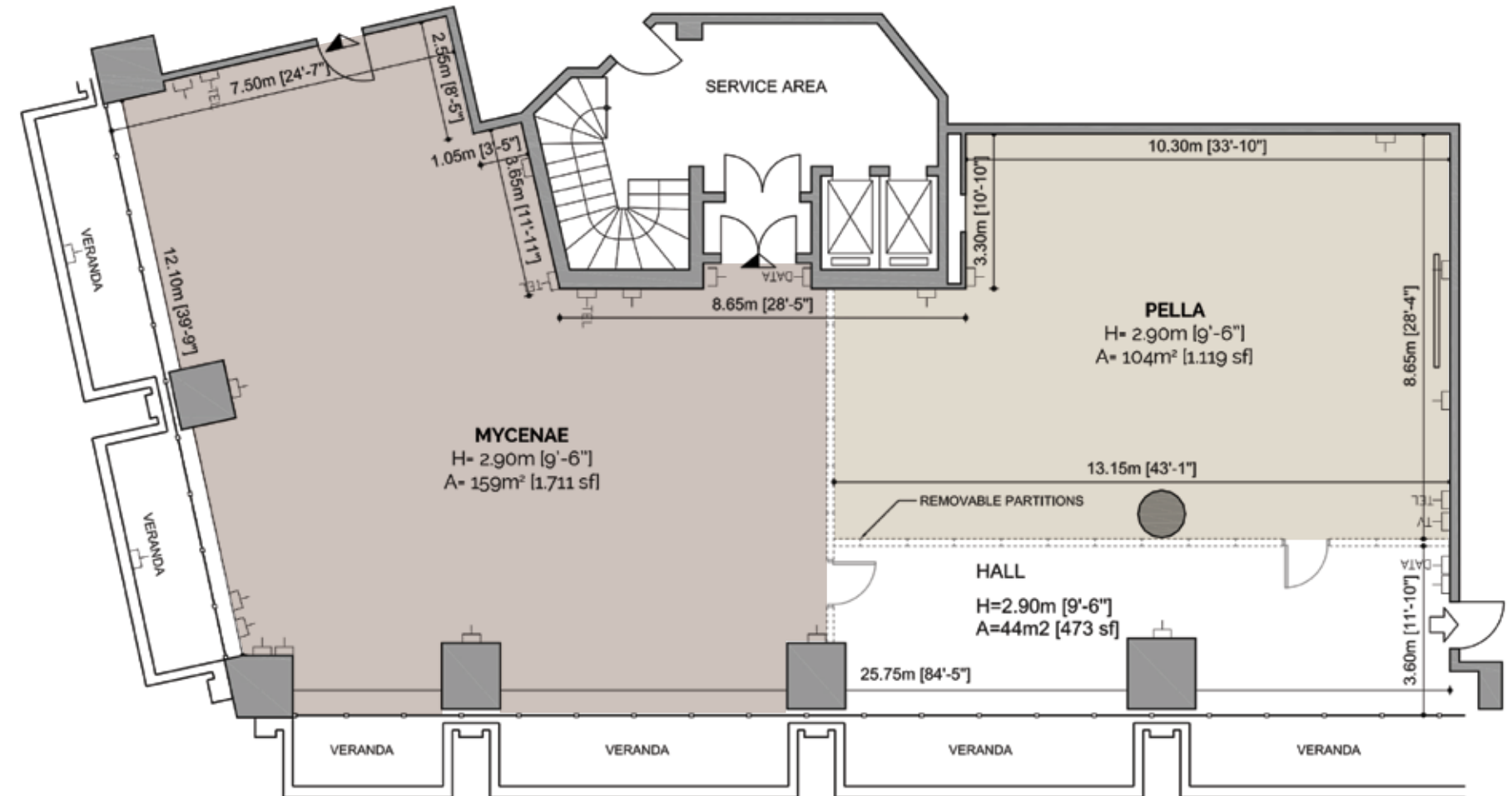


PELLA BREAK-OUT ROOM

- H=2.90m [9'-6"]
- A= 104m² [1.119 sf]
- Total Room Capacity in Theater Style: 100 delegates

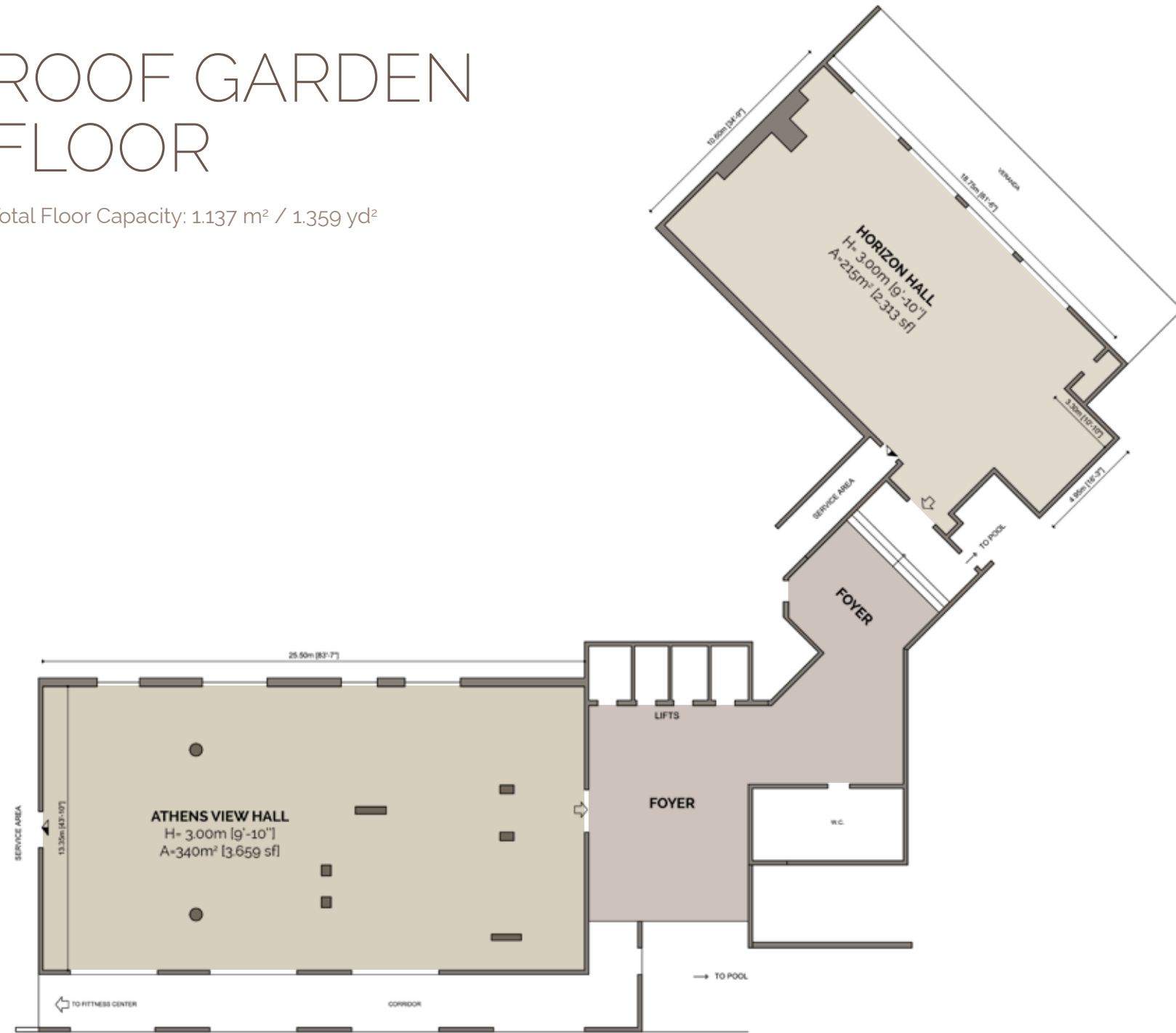
MYCENAE MEETING ROOM

- H= 2.90m [9'-6"]
- A= 159m² [1.711 sf]
- Total Room Capacity in Theater Style: 140 delegates



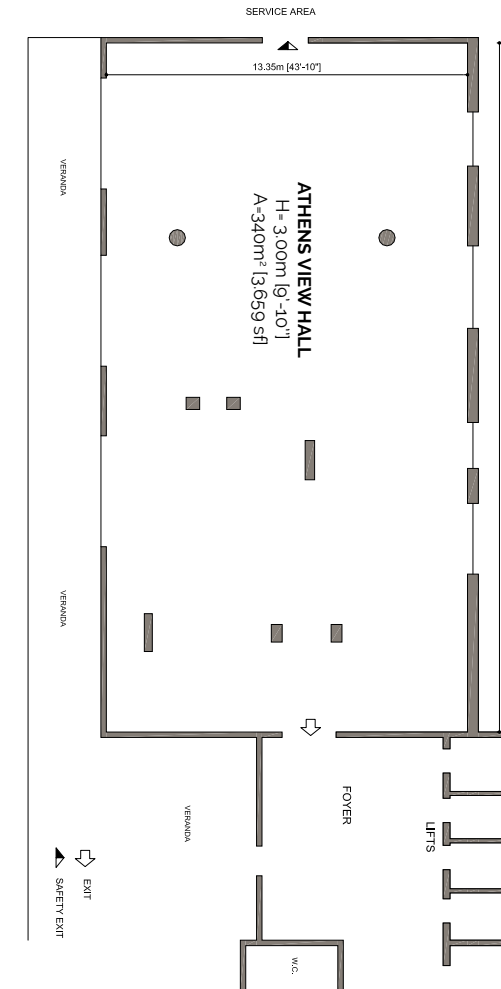
ROOF GARDEN FLOOR

Total Floor Capacity: 1.137 m² / 1.359 yd²



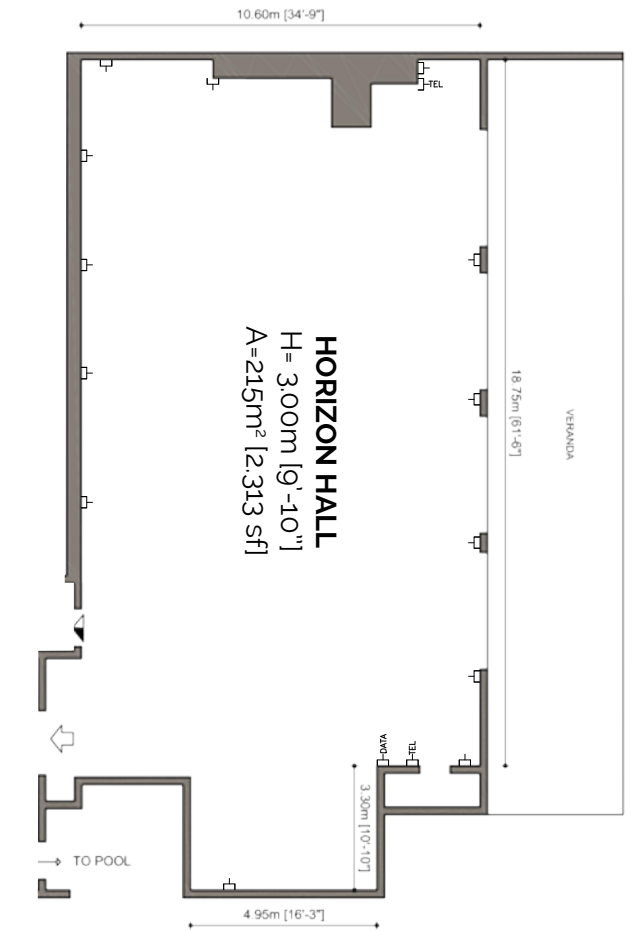
ATHENS VIEW HALL

- ◆ H=3.00m [9'-10"]
- A= 340m² [3.659 sf]
- ◆ Total Room Capacity in Theater Style: 300 delegates



HORIZON HALL

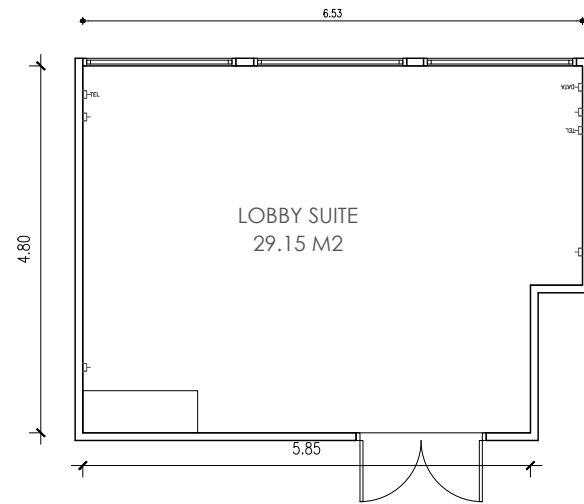
- ◆ H=3.00m [9'-10"]
- A= 215m² [2.313 sf]
- ◆ Total Room Capacity in Theater Style: 220 delegates



LOBBY SUITE

LOCATED ON THE LOBBY LEVEL

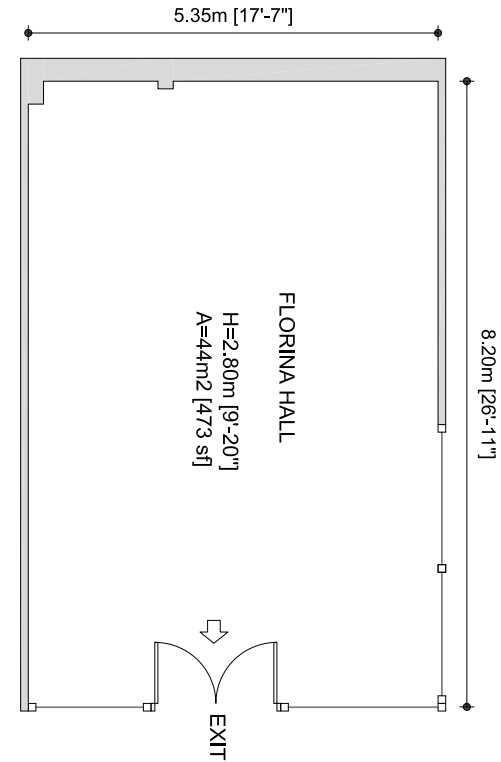
- H= 3.60m [11'-8"]
- A= 28m² [301 sf]
- Total Room Capacity in Cocktail Style:
20 delegates



FLORINA BREAK-OUT ROOM

LOCATED ON THE LOBBY LEVEL

- H= 2.80m [9'-18"]
- A= 44m² [473 sf]
- Total Room Capacity in Theater Style:
50 delegates



ARISTOTELIS

1 + 2 +3

LOCATED ON THE 8TH FLOOR

ARISTOTELIS 1

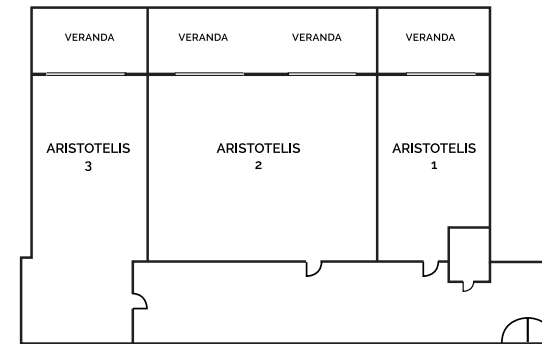
- H= 2.50m [8'-20'] | A= 17m² [183 sf]
- Total Room Capacity in Cocktail Style:
10 delegates

ARISTOTELIS 2

- H= 2.50m [8'-20'] | A= 41m² [441 sf]
- Total Room Capacity in Cocktail Style:
30 delegates

ARISTOTELIS 3

- H= 2.50m [8'-20'] | A= 24.5m² [263.7 sf]
- Total Room Capacity in Cocktail Style:
15 delegates



MEETING ROOMS	DIMENSION	CAPACITY					
		THEATER	SCHOOL	BOARD	BANQUET	CABARET	COCKTAIL
OLYMPIA A	300	450	220	80	250	130	400
OLYMPIA B	300	450	220	70	250	130	350
OLYMPIA	600	1000	500	160	580	330	1000
FOYER OLYMPIA	550				350	190	400
OLYMPIA HALL	1150	1300			1000	580	1500
VERGINA	330	300	160	80	240	130	300
ILISSOS	420	500	290	78	330	180	500
MACEDONIA A	210	220	110	44	150	75	200
MACEDONIA B	210	220	110	44	150	75	200
MACEDONIA	420	500	290	78	330	180	500
FOYER MACEDONIA	550				350	180	400
KOZANI	60	50	28	18	30	18	40
EDESSA	60	50	28	18	30	18	40
NAOUSSA	60	50	28	18	30	18	40
MACEDONIA HALL	970	800			700	400	1000
PELLA	106	100	60	34	110	60	120
MYCENAE	163	140	80	44	110	60	140
PELLA-MYCENAE HALL	310	300	160	70	240	130	300
HORIZON	200	220	120	64	170	96	250
ATHENS VIEW	300	300	140	50	300	170	350
FLORINA	43	50	28	18	40	24	40
LOBBY SUITE	28	20	12	14	20	12	15
ARISTOTELIS 1	15.5	12	8	8	10	6	10
ARISTOTELIS 2	35.75	40	24	20	20	12	30
ARISTOTELIS 3	23.63	20	12	14	20	12	15