

IASSIDD Asia-Pacific Regional Congress, Bangkok 2017

Content

Acknowledgements	i
Welcome Message	
Former Prime Minister of Thailand, Anand Panyarachun.....	1
IASSIDD	2
IASSIDD President, Philip W. Davidson	2
IASSIDD Vice-President, Asia-Pacific, Henry Kwok	3
Chair, IASSIDD Scientific Program Committee, Ivan Brown	4
Bangkok	5
Chair, Local Organizing Committee, Boonruang Triruangworawat	5
The President of Chulalongkorn University, Bundhit Eua-arporn	6
Chair, Bangkok Scientific Program Committee, Amporn Benjaponpitak	7
Congress Team	8
Bangkok Local Organization Committee	8
IASSIDD Scientific Program Committee.....	9
Bangkok Scientific Program Committee	10
General Information	11
Venue	11
Registration and General Information Desk.....	12
Internet Access (Free Wi-Fi)	12
Map	12
Floor Plans	13
Instructions for Presenters and Chair.....	15
The Programs	17
How to use the Program Book	17
Program at a glance.....	18
Concurrent Sessions	21
Poster sessions	34
Academic workshops.....	37
Site visits.....	38
Exhibitors.....	38
Presenter Index	39
Support Organizations	43
Local host organizations	43
Sponsors	43

IASSIDD 15th World Congress 2019 Announcement	44
IASSIDD 5th Europe Congress 2018 Announcement	45

Acknowledgements

An event such as this could not take place without the efforts of many people. We would like to thank all committees and volunteers for the hours of work involved. We would also like to thank all presenters who will share their work with you.

Welcome to Thailand.

Former Prime Minister of Thailand, Anand Panyarachun



I am pleased to extend a warm welcome to all participants of the 4th Asia-Pacific Regional Congress of the International Association for the Scientific Study of Intellectual and Developmental Disabilities (IASSIDD), which is being held from November 13 to 16, 2017 in Bangkok, Thailand.

I would like to congratulate IASSIDD for convening this important Congress and for its commitment to enhancing the health and quality of life of persons with disabilities and their families. IASSIDD's focus on persons with intellectual and developmental disabilities is especially commendable as our society needs to accord higher priority to the special needs of this particular target group.

For the first time, the IASSIDD Congress is being hosted by Thailand, a country that is working progressively towards an inclusive, barrier-free and rights-based society for persons with disabilities. I am pleased to note that over 10 Thai organizations are co-hosting the present Congress, including the Rajanukul Institute and Chulalongkorn University which are serving as the main Local Organizing Committee. The active engagement of these organizations reflects the vibrancy of the disability movement in our country.

The theme of the present Congress is "Inclusiveness and Sustainable Development", which is indeed a very relevant issue, particularly since all United Nations Member States have committed to achieving the "Sustainable Development Goals", as adopted by the General Assembly in September 2015.

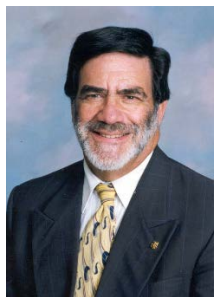
I wish you every success in your deliberations and look forward to the outcome of the 4th IASSIDD Congress.

A handwritten signature in black ink, consisting of stylized cursive letters.

Anand Panyarachun
Former Prime Minister of Thailand

IASSIDD

IASSIDD President, Philip W. Davidson



Welcome to Bangkok! We meet here for the 2017 Asia-Pacific Regional Congress, the first time an IASSIDD event of any kind has been hosted in Thailand. On behalf of the entire IASSIDD family, we are delighted to be here.

The exciting program for this Congress strikes a unique balance between basic and applied science, and reflects presentations, posters, workshops and demonstrations of interest to scientists, practitioners, providers, self-advocates, policy-makers and students. Many of the sessions also involve representation from all of these groups. It offers the opportunity for everyone to get excited about research, regardless of whether this is your first IASSIDD meeting, or you are a veteran participant. As I attend our Congresses and talk to attendees, or when I look at post-meeting evaluations, I am always struck by how many of you remark on how much you have learned by being here.

Putting together an event like this one requires a lot of work by many people. I want to especially thank IASSIDD vice presidents Dr. Henry Kwok and Dr. Ivan Brown for their leadership and vision in planning the Congress and organizing the program. We must also all thank Dr. Amporn Benjaponpitak, Director of our host, The Rajanukul Institute of the Department of Mental Health, Ministry of Public Health of Thailand. Dr. Amporn and her Local Organizing Committee have worked tirelessly to prepare for the Congress and to make all of us feel at home in Bangkok.

So enough from me! Please enjoy the Congress and the wonderful city of Bangkok.

A handwritten signature in black ink that reads "Philip W. Davidson". The signature is fluid and cursive.

Philip W. Davidson, Ph.D.
IASSIDD President

IASIDD Vice-President, Asia-Pacific, Henry Kwok



It gives me great pleasure to welcome all of you to the 4th Asia-Pacific Regional Congress in Bangkok.

This is the most important piece of work during my term of service as the Vice-President (Asia-Pacific) of IASSIDD since 2012. I will be stepping down by the end of this year after this Congress has taken place.

I feel extremely fortunate and honored to work with our excellent partners in Thailand: The Rajanukul Institute and the Chulalongkorn University Demonstration School. Without their support, we would not be able to organize this event smoothly and successfully in Bangkok. Appreciation must be extended to Dr. Amporn Benjaponpitak and her staff who worked diligently to take care of every detail of this conference. Special thanks must also be given to Dr. Ivan Brown, Chair of our Scientific Program Committee, to ensure that our program is of high professional quality and is evidence-based.

This regional congress has become a signature event that attracts an impressive number of healthcare practitioners, researchers, educators, carers, social workers and policy makers from not only the Asia-Pacific region but from around the world. We have a rich and broad program with distinguished international speakers to share their knowledge, expertise and research findings. I am most impressed to witness the increasing contribution of research studies from our Asia-Pacific region in IASSIDD conferences over the past ten years. This shows that research and service developments in our field can be a reality in an increasing number of low and middle income countries.

I hope the keynote speeches, paper presentations, roundtable discussions and posters will inspire every participant to further enhance their knowledge and skills in the support of persons with IDD when they return to their home country. Lastly, I wish all of our delegates a rewarding and memorable time in Bangkok enjoying the friendliness and hospitality of Thailand.

A handwritten signature in black ink, consisting of a series of fluid, connected strokes that form a stylized representation of the name Henry Kwok.

Professor Henry Kwok FRCPsych
Chair, 4th Asia-Pacific Regional Congress, IASSIDD
Vice-President (Asia-Pacific), IASSIDD, 2012-2017

Chair, IASSIDD Scientific Program Committee, Ivan Brown



It is a great pleasure for me to act as Chair of the Scientific Program Committee for IASSIDD's Asia-Pacific Congress in Bangkok this year.

Putting together a program of this size takes a great deal of work and involves a great many people. The IASSIDD and Bangkok Congress Committees that were formed were a pleasure to work with, as were the several sub-committees I formed to complete specific aspects of getting the program ready. I cannot stress enough how gratified I am that so many people have been willing to volunteer their time and skills to get things done efficiently. For every job that came along, all I had to do was ask and there were always enough volunteers to complete the work quickly so we could move along to the next step. I have listed those who contributed most on the opposite page, but I also wish to acknowledge the help of numerous others who assisted in lesser ways with helpful advice, suggestions, and encouragement.

We are very pleased to include five keynote addresses by eminent scholars in our program. The topics of these addresses reflect the four main themes of the larger program: Support models and strategies, Successful living within communities, Education in schools and in society, and Health through the lifespan. The more than 200 oral presentations, poster presentations, roundtables, and demonstrations all illustrate the wide variety of ways these topics are realized in the field of intellectual and developmental disabilities and in the lives of people with disabilities.

We take special pride this year in inviting disability scholars and professionals from Thailand to our congress. Our local organizing committee has worked very hard to find ways to include as many people from Bangkok and surrounding areas as possible. Such inclusion is particularly important to IASSIDD, an organization whose main purpose is to generate and share helpful information within the field of intellectual and developmental disabilities throughout the world.

I can say with some confidence – and I am sure I am joined by all those who have served on the various Scientific Program Committees – that you will find much of interest in the program we have put together. It is our hope that you will adopt many new ideas we offer in this program as you move forward in your professional and personal lives.

With warm wishes, and all the best for an enjoyable stay in Thailand!

A handwritten signature in blue ink that reads "Ivan Brown". The signature is written in a cursive, flowing style.

Ivan Brown, Ph.D.
Chair, Scientific Program Committee

Bangkok

Chair, Local Organizing Committee, Boonruang Triruangworawat



It is my great pleasure and privilege to welcome you all, on behalf of the Local Organizing Committee, to the 2017 IASSIDD 4th Asia-Pacific Regional Congress from November 13-16, 2017 at the Ambassador Hotel, Bangkok. At the same time, we are also very proud indeed to host this Congress in Thailand with kind assistance, support, guidance and insight from all of you. Therefore I would like to take this opportunity to express my sincere thanks and gratitude to all of our co-host organizations, International Association for the Scientific Study of Intellectual and Developmental Disabilities (IASSIDD) and in particular our honorable speakers, without whose support the Congress could not take place.

The Congress highlights the theme “Inclusiveness and Sustainable Development” in line with The United Nations Sustainable Development Goals (SDGs). With the 17 SDGs that all 191 UN Member States have agreed to try to achieve by the year 2030, health has a central place in the SDG 3 – ensure healthy lives and promote well-being for all at all ages. In addition, disability is referenced in multiple parts of the SDGs, specifically in the parts related to education, social inclusion, growth and employment, poverty reduction, inequality, environmental protection, sanitation, transport and accessibility of healthcare and human settlements. The IASSIDD Asia-Pacific Regional Congress is taking place at a time when the recently launched and newly implemented The United Nations 2030 Agenda for Sustainable Development is putting particular emphasis on inclusion and development. This holds a deep promise for persons with disabilities.

The main purpose of the 2017 IASSIDD 4th Asia-Pacific Regional Congress is to bring together researchers, scholars and specialists from around the globe in the field of intellectual disability to promote scientific research studies and to share evidence-based data. Our long-term aims are to enhance the quality of life of people with disabilities and their families, to enable policy makers and service providers to formulate appropriate strategies and policies, and in addition to make appropriate decisions. We strongly believe that you will have ample opportunities to update your knowledge, share success stories, and network, in order to forge an international community of leading academics, researchers and experts through this interactive Congress platform.

Finally, I wish all of you, distinguished participants, ladies and gentlemen, a very productive and successful Congress, and also have a pleasant stay in Bangkok, Thailand. All the best!

A handwritten signature in black ink, appearing to read 'Boonruang Triruangworawat'.

Sqn.Ldr. Dr. Boonruang Triruangworawat
Chair, Local Organizing Committee

The President of Chulalongkorn University, Bundhit Eua-arporn



It gives me great pleasure to welcome you all to the 4th Asia-Pacific Congress of the International Association for the Scientific Study of Intellectual and Developmental Disabilities (IASSIDD) in Bangkok, Thailand.

It is a privilege that Chulalongkorn University has the opportunity to co-host this congress under the theme of “Inclusiveness and Sustainable Development”. The year 2017 marks the beginning of the second century of Chulalongkorn University. We celebrate the centenary of the establishment with even stronger commitment to facilitate the sharing of new knowledge in human development and to support all significant scholarly activities that help promote closer ties among our treasured partners in Thailand, in the Asia-Pacific region, and in the global communities .

IASSIDD, the World leading association for research on disabilities, has held congresses in the Asia-Pacific region to enhance collaboration among researchers and practitioners here and in the broader international community in order to explore innovative and effective ways of supporting individuals with intellectual and developmental disabilities, their families, and their communities. I realize how critical it is to have this regional congress as it will allow us to be even more aware of the differences and commonalities that exist in our region. Our shared vision of impactful outcomes toward inclusive society for all is highly prized here.

I am confident that this gathering of scholarly and caring people from all over the world coming to share ideas from global perspectives, will inspire all of us to continue improving our missions to help our societies grow and evolve in order to allow equitable access to human development and fundamental freedom for all people.

I would like to take this opportunity to express my sincere gratitude to the IASSIDD committee and all staff for their dedication and hard work to plan and organize this congress. On behalf of our team, I also would like to acknowledge that we are fortunate to have wonderful support from several local organizations in Thailand.

Welcome dear friends and colleagues to the IASSIDD 4th Asia-Pacific Regional Congress. I would like to also extend a special welcome to our international guests to Bangkok, Thailand. I hope that you will enjoy yourself and have a memorable experience in Bangkok. Thank you and have a pleasant day.

Yours sincerely,

A handwritten signature in blue ink, appearing to read 'Bundhit Eua-arporn'.

Professor Bundhit Eua-arporn, Ph.D .
President of Chulalongkorn University

Chair, Bangkok Scientific Program Committee, Amporn Benjaponpitak



It is a great pleasure and an honor to welcome all of you to attend the 2017 IASSIDD 4th Asia-Pacific Regional Congress, which will be held from November 13-16, 2017 at the Ambassador Hotel, Bangkok, Thailand.

The theme of the 2017 IASSIDD 4th Asia-Pacific Regional Congress is “Inclusiveness and Sustainable Development”. The main aim of the conference is to bring together researchers, scientists and academic professionals in the field of intellectual disabilities and to promote research and the exchange of information that will enhance the health and quality of life of people with disabilities and their families, whilst also to assist governments and service providers to develop policy and procedures based on scientific evidence.

The 2017 IASSIDD 4th Asia-Pacific Regional Congress is organized jointly by the research and education institutes and Non-Governmental Organizations; and supported by the Department of Mental Health Thailand, the Department of Empowerment of Persons with Disabilities and the International Association for the Scientific Study of Intellectual and Developmental Disabilities (IASSIDD).

We have established robust committees: International; Program; and Local Organizing Committees, which are populated by outstanding psychiatrists, pediatricians, educators, psychologists, nurses and other multidisciplinary team members. The International Program committee has set up a fabulous program focusing on Sustainable Development Goals. We will also have a workshops on Sexuality - Enabling Rights and Choices, Inclusive Education, Special Olympics in Asia, Disasters and Crises, Recent Advances in Autism and Innovative Research Methods. There will also be updates on our understanding of the genetics, pathogenesis, evaluation and treatment of Intellectual Disabilities. At the end of the Congress, we hope that delegates will be able to garner the most up-to-date information available in the field of intellectual disabilities.

We believe the 2017 IASSIDD 4th Asia-Pacific Regional Congress will provide a wonderful forum for you to refresh your knowledge base and explore innovations with regard to intellectual disabilities. The Conference will strive to offer plenty of networking opportunities, especially by providing you with the opportunity to meet and interact with leading professors and researchers, friends and colleagues as well as sponsors and exhibitors from around the globe.

We hope you will join us for a symphony of outstanding science, and take a little extra time to enjoy the spectacular and unique beauty of this region.

Amporn Benjaponpitak
Chair, Bangkok Scientific Program Committee

Congress Team

Bangkok Local Organization Committee

Chair:

Sqn.Ldr. Dr. Boonruang Triruangworawat

Vice-Chair:

Dr. Chinoros Leesawat, Dr. Pongkasem Khaimook, Dr. Samai Sirithongthaworn

Executive Councilor:

Asst. Benja Chonlatanon, Prof. Dr. Bundhit Eua-arporn, Mr. Somkid Somsri,
Assoc. Prof. Dr. Siridej Sujiva, Asst.Prof.Auemphorn Mutchimwong, Prof. Dr. Vorasuk Shotelersuk,
Prof. Dr. Duangrurdee Wattanasirichaigoon

Committee:

Maj. Dr. Ra-Shane Meesri, Asst. Prof. Somsri Tritiphen, Ms. Nantana Ratanakorn,
Dr. Burin Suraarunsamrit, Ms. Suda Wongsawat, Dr. Benjamas Prukkanone,
Assoc. Prof. Dr. Narutt Suttachit, Dr. Chanisa Tantixalerm, Asst. Prof. Tinnakorn Bourpul,
Dr. Mathurada Suwawnaphou, Dr. Rachanee Chalongkuakul, Ms. Ornanong Songcharoen,
Dr. Suda Suk-um, Dr. Samart Rattanasakorn, Dr. Nantanoot Suwannawut,
Mr. Voravate Chonlasin, Mr. Pakinai Soontornvipart, Mr. Suchart Owatwunasakul,
Mr. Chusak Janthayanond, Dr. Samrerng Virachanang, Ms. Rachaniwan Bulakul,
Mr. Kritsiam Arayawongchai

Secretary:

Dr. Amporn Benjaponpitak

Assistant Secretary:

Dr. Noppawan Sriwongpanich, Dr. Worawan jongsangawittayalert

IASSIDD Scientific Program Committee

Chair:

Ivan Brown

IASSIDD Committee Members and Advisors:

Henry Kwok, Kuo Yu Wang, Keith McVilly, Trevor Parmenter, Philip Davidson, Vianne Timmons, Glynis Murphy, Malin Broberg, Linda Linden, Alice Schippers, Tamar Heller, Angus Buchanan, Colleen Adnams, Angela Hassiotis, Matthew Janicki

Consultants, Special Interest Research Groups:

Marjorie Aunos, Jan Blacher, Michael Brown, Tobias Buchner, Jayne Clapton, Rhonda Faragher, Peter Langdon, Bea Maes, Sandy Magana, Philip McCallion, Alice Schippers, Laurence Taggart, Scott Thompson

Assistants

Arezu Alami, Susan Balandin, Jeanne Brennan, Alexandra Campbell, Linda Chambers, Jeffrey Chan, Mo Chen, Rhonda Farragher, Rachel Harrison, Vimallan Manokara, Anastasia Potapovych, Lara Sams, Sunitha Thomson, Hannah Zazzi

Peer Reviewers:

Michael Arthur-Kelly, Susan Balandin, Ivan Brown, Tobias Buchner, Jeffrey Chan, Susan Collings, Rhonda Faragher, Fabrizio Fea, Eva Flygare, Juliet Goldbart, Sandra Magana, Karen Nankervis, Jenneken Naaldenberg, Chris Oliver, Annette van der Putten, Fiona Rillotta, Dana Roth, Alice Schippers, Iva Strnadova, Laurence Taggart, Bev Temple, Nina

Bangkok Scientific Program Committee

Chair:

Dr. Amporn Benjaponpitak

Vice-Chair:

Asst. Prof. Somsri Tritiphen

Executive Councilor:

Dr. Samai Sirithongthaworn, Dr. Suparat Ekasawin

Committee:

Prof. Dr. Vorasuk Shotelersuk, Prof. Dr. Kanya Suphapeetiporn, Dr. Ponghatai Damrongphol, Dr. Thipwimol Tim-Aroon, Dr. Samart Rattanasakorn, Dr. Nantanoot Suwannawut, Mr. Pakinai Soontornvipart, Asst. Prof. Dr. Potipun Panit, Dr. Liviu Vedrasco, Mr. Voravate Chonlasin, Dr. Wiranpat Kittitharaphan, Mrs. Vanida Chaninyuthwong, Dr. Premvadee Densiriaksorn, Dr. Chadapim Phoasavasdi, Ms. Sirorat Nakthongkaew, Ms. Phakawan Sutthiwong

Secretary:

Dr. Noppawan Sriwongpanich, Dr. Worawan Jongsangawittayalert

Assistant Secretary:

Ms. Chutiwan Kaewsai

General Information

Venue

Accessibility

Ambassador hotel is located at Soi Sukhumvit 11 which is close proximity to the sky train Nana station (E3) and Sukhumvit subway station.



Sky Train  Nana Station Subway  Sukhumvit Station

Parking is in front of the main building and also the adjacent building. Parking for people with disabilities is in front of the old wing where you can go directly to the check in counter.

Fire, medical and security emergencies

Dial 0 to contact the check in counter.

For advance medical emergency, call 1669 from your cell phone.

Photocopy and Fax services are not available.

Telephones-Public

Public telephones are located in front of the check in counter.

Lunch Orchid room, floor 3

Registration and General Information Desk

The registration desk will be open at the following times and location:

Reception counter (near the hotel lobby)

- Sunday, November 12-Monday, November 13 ---- 10.00-18.00

In front of Convention Hall A-B

- Tuesday, November 14-Thursday, November 16 ---- 8.00-16.00

Internet Access (Free Wi-Fi)

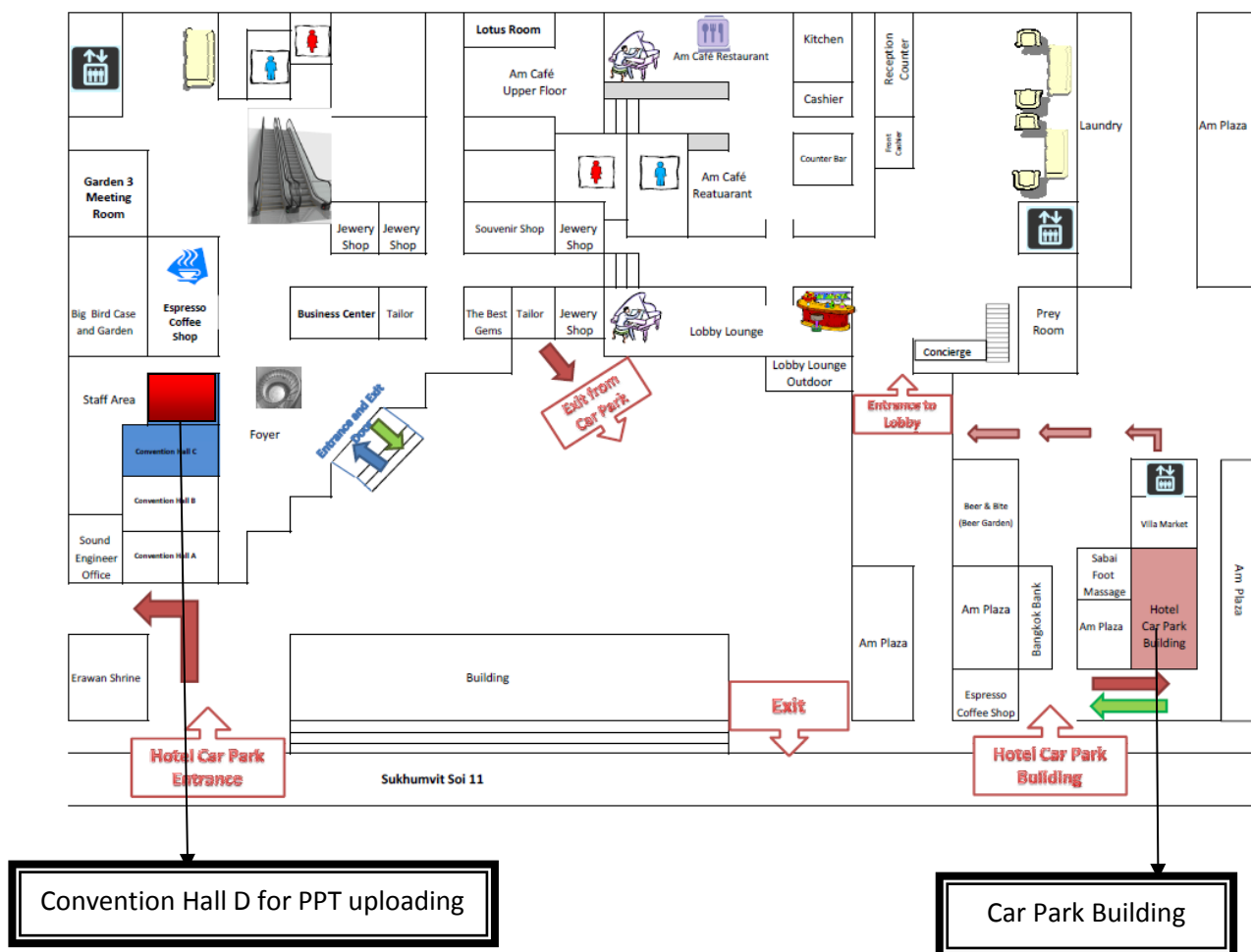
After you check in, you will get the wifi password to connect from your room.

Wi-Fi coverage for delegates extends throughout the venue, including Convention Halls, Garden, Lavender, Orchid, Peony, Cattleleya, Salathai, Lobby and Am Café.

User name is the same as the name of each room.

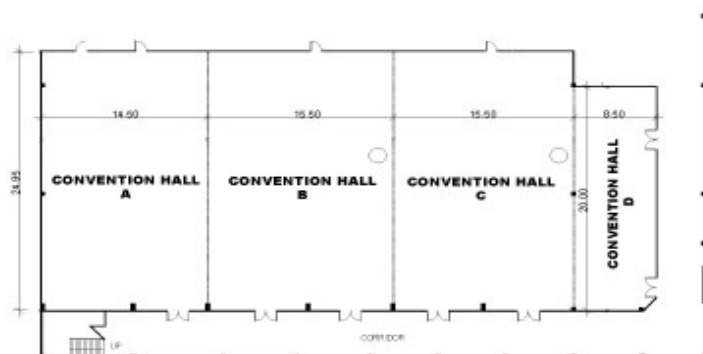
Password is am1117.

Map



Floor Plans

Convention Hall A, B, C, D 1st floor



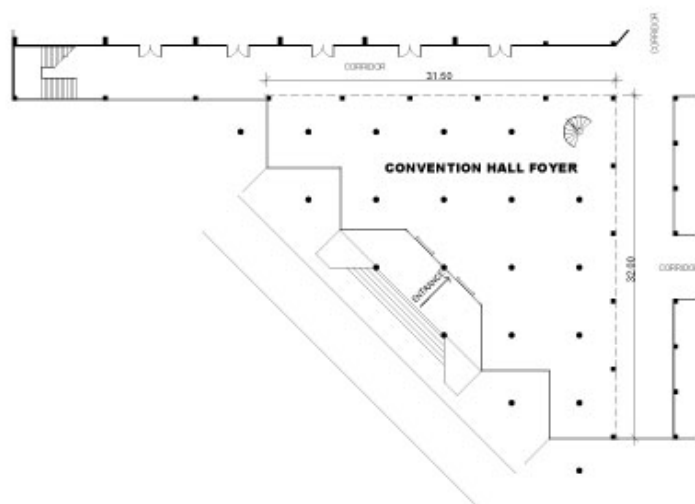
Convention Hall A, B, C

- Opening/closing ceremony
- Keynote address
- Gala dinner

Convention Hall D

- Speaker preparation room

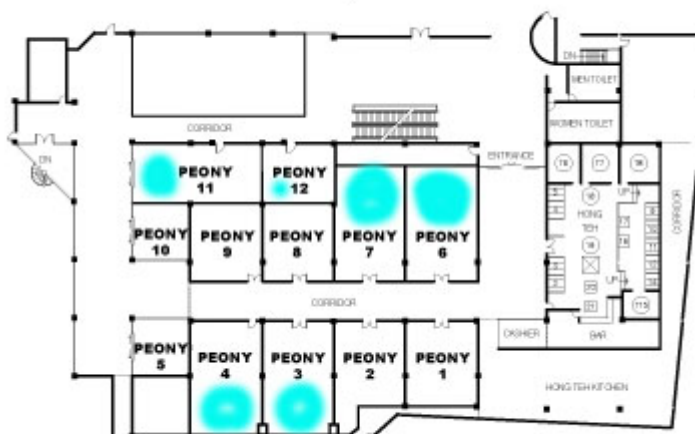
Convention Hall Foyer 1st floor



Convention Hall Foyer

- Exhibition
- Poster presentation

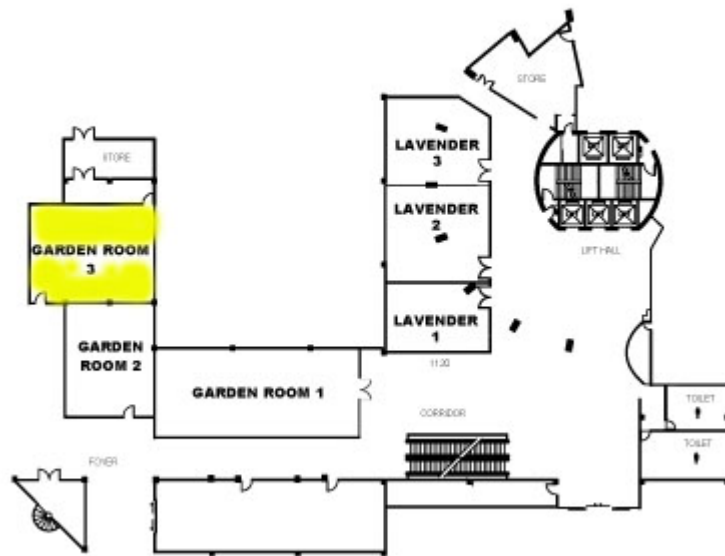
Peony 1-12 2nd floor



Peony 3,4,6,7,11,12

- Concurrent session
- SIRG Meeting

Garden Room 1, 2, 3 Lavender 1, 2, 3 2nd floor



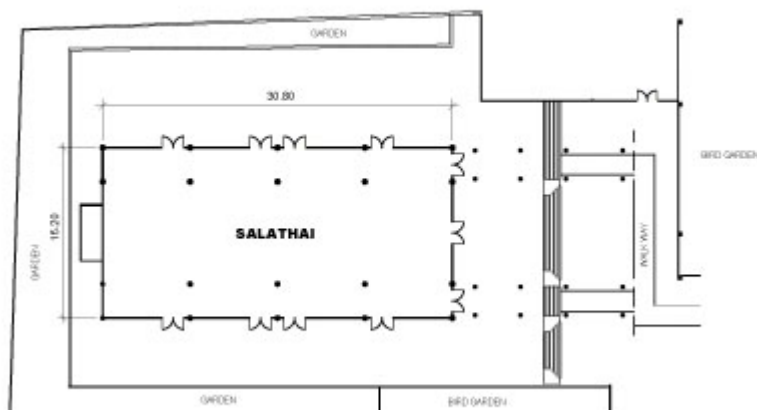
Garden room 3

- Concurrent session
- SIRG Meeting
- Council Meeting

Lavender 1

- IASSIDD Executive Meeting

Salathai 3rd floor



Salathai

- Welcome cocktail

Instructions for Presenters and Chair

Presenters should pre-load your power point presentations. Simply take your USB drive to the speaker preparation room as soon as possible and the technical support staff will assist you. The rooms will be open from 8.00-17.00 during November 13-16, 2017. The speaker preparation room on November 13 will be at VIP room which located at the 1st floor of the hotel while during November 14-16 will be at Convention Hall D.

The program for this congress is quite full, so please note the location of your room and the time your session begins to keep the program running on time. The checklists below provide some helpful hints for making your session a success.

Chair Checklist

- ☐ Arrive at your room 5-10 minutes before your session begins.
- ☐ Introduce yourself to the presenters, and ask if there is anything they need.
- ☐ Call the group to order and **begin the session on time**.
- ☐ Introduce yourself and your co-chair (if there is one)
- ☐ Introduce each speaker briefly (name, country, and title of presentation), mentioning the time they have available.
- ☐ Warn the presenters a few minutes before they need to stop.
- ☐ Field a few questions and comments from the audience at the end of each presentation.
- ☐ Start each new presenter with a brief introduction, and **on time**.
- ☐ At the end, briefly thank the speakers for their presentations, and the audience for their attention.

Symposium and Demonstration Presenters Checklist

- ☐ Note the name of your presentation room, and discover where it is **before** your session.
- ☐ Arrive at your room 5-10 minutes early so that you will have time to get your materials ready, or put your power point on the desktop, for quick and easy access when you begin your presentation.
- ☐ Introduce yourself to the sessions Chair(s) and to the other presenters.
- ☐ Most 1-hour sessions have 4 presenters. Prepare your presentation for 10 minutes, so that there is time for introductions at the beginning and a few questions and comments at the end. If there are fewer than 4 presenters in your session, divide the time equally. **Do not go past your time**.
- ☐ If you have handouts, take the extras with you when you leave the room.

Poster Presenters Checklist

- ☐ Put up your poster as soon as you can, but before the beginning of the first poster session.
- ☐ Stand by your poster during the two poster sessions to engage viewers in discussions.
- ☐ Leave your poster up throughout the congress.
- ☐ At the end of the congress, take your poster down and take it with you.

Roundtable Presenters Checklist

- ☐ Arrive at your room 5-10 minutes before your session begins to prepare your materials.
- ☐ One of your group should act as the main chair, as there are no Chair assigned to the Roundtables.
- ☐ Call the group to order and ***begin the session on time.***
- ☐ Typically, a Roundtable involves some presentation at the beginning, followed by ample time for audience discussion.
- ☐ One purpose of a Roundtable is to generate new ideas, so you may want to assign a recorder.
- ☐ Keep the discussions going, and make sure there is a balance of voices from the audience.
- ☐ End the session on time.
- ☐ If you have handouts, take the extras with you when you leave the room.

The Programs

How to use the Program Book

Within this section you will find:

1. Program at a Glance: This section offers an overview and time schedule of activities that will be hold during November 12-16. Activities include all plenary and poster presentations, meetings, roundtable, demonstration and Academic workshops.

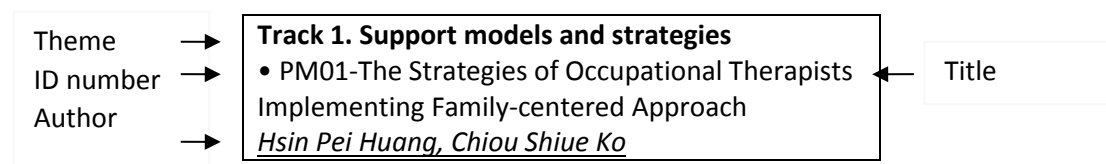
2. Concurrent Sessions 1 through 8: Concurrent sessions are listed in the table which identifying the room, type of session, title, chair and individual presentations.

Garden 3	← Room number
Sym1. Measuring outcomes (Tr.1Model)	← Type, title of session and congress themes
Chair: Valerie Bradley Co-chair: Chosita Pavasuthipaisit	← Chair and Co-chair
Measuring Outcomes of Service Provision: The Development of an Outcomes Measure <u>Stella Koritsas, Nick Hagiliassis, Celeste Cuzzillo</u>	← First presentation in symposium, showing title of presentation, author
Measuring Goal Realization Associated with Disability Services and Supports: Initial Evidence for a New Tool <u>Nick Hagiliassis, Stella Koritsas, Celeste Cuzzillo</u>	← Second presentation in symposium, showing title of presentation, author
Success Factors for Matching Different Types of Disabilities to Work: Two Case Verifications of Work Continuance Support A Type Office in Japan <u>Muneyuki Nakachi, Ayaka Nakao, Hiroo Funaya, Suguru Tamaki</u>	← Third presentation in symposium, showing title of presentation, author
Measuring Progress Toward the Goals in the CRPD: The Need for State Structures and Policies to Measure Outcomes <u>Valerie Bradley, Alexandra Bonardi</u>	← Forth presentation in symposium, showing title of presentation, author

3. Congress themes: Every symposium in the congress is represented by a theme which represented by codes. The following table explains the codes and the themes they represent.

Type of session		Congress theme : Symposium		
RT.	Round table	Track 1	Model	Support models and strategies
Sym.	Symposium	Track 2	Community	Successful living within communities
DM.	Demonstration	Track 3	Education	Education in schools and in society
		Track 4	Health	Health through the lifespan

4. Poster Sessions 1 and 2: Posters will be presented from 17:00-18:00 on November 14, 2017 and 16:00-17:00 on November 15, 2017. A complete listing of all posters, indicating theme, ID number, title and author.



5. Index of Presenters: An alphabetical listing of first authors as known at time of printing.

Program at a glance

12 November

Time	Room	Program
10:00 -18:00	Lavender 1	IASSIDD Executive Meeting*

* for The IASSIDD committee only

13 November

Time	Room	Program
09.30-12.30	Assemble in the lobby at 8.00	Site visit: A. Rajanukul Institute B. Sataban Saengsawang Foundation C. Chulalongkorn University Demonstration school
13:30-16:30	Peony 4 Peony 3 Peony 11-12 Peony 6-7 CUD CUD	Academic Workshop: A. Sexuality-Enabling Rights and Choices <i>Patsie Frawley, Yueh-Ching Chou</i> B. Special Olympics in Asia <i>Simon Koh, Chanchai Kem Kaew</i> C. Disasters & Crises <i>Yayoi Kitamura, Takako Miura, Chie Yoshimura</i> D. Inclusive Education <i>Rhonda Faragher, Ben Law, Majda Schmidt</i> E. Innovative Research Methods <i>Angela Hassiotis, Ivan Brown</i> F. Recent Advances in Autism <i>Sandy Magana, Naomi Ekas</i>
14:00–18:00	Garden 3	Council Meeting*
18:00-20:00	Salathai	Welcome cocktail

* for The IASSIDD committee only

14 November

Time	Room	Program
07:30-09:00	Breakfast room, Peony 6-7	SIRG Chair Meeting*
08.00-09.00	In front of Convention hall A-B	Registration
09.00-10.00	Convention hall A-B	Opening ceremony
10.00-10.50	Convention hall A-B	Plenary lecture1: Professional Education & Learning for People Supporting Individuals with Disabilities through the Lens of Implementation Science <i>Michael Arthur-Kelly</i> <i>Chair: Philip Davidson, President, IASSIDD</i> <i>Co-Chair: Chandhita Pruksananonda</i>
10.50-11.00	Convention hall A-B	An introduction to the IASSIDD International Visits Program <i>Ivan Brown, Henry Kwok</i>
11.15-12.15	Various room	Concurrent sessions 1
12.15-13.15	Orchid, Floor 3	Lunch break
13.15-14.15	Convention hall A-B	Plenary lecture 2: Advances in Medicine for People with Intellectual and Developmental Disabilities <i>Vorasuk Shotelersuk</i> <i>Chair: Colleen Adnams, IASSIDD President-Elect</i> <i>Co-Chair: Amporn Benjaponpitak</i>
14.30-15.30	Various room	Concurrent sessions 2
15.45-16.45	Various room	Concurrent sessions 3
17.00-18.00	Convention hall foyer	Poster presentation 1
18.15-20.30	Convention hall A-B	Gala dinner

* for The IASSIDD committee only

15 November

Time	Room	Program
07:30-09:00	Breakfast room, Peony 6-7	Academy: Uganda breakfast meeting*
09.00-10.00	Convention hall A-B	Plenary lecture 3: Establishing Mental Health Supports for People with Intellectual and Developmental Disabilities in Asian Countries <i>Henry Kwok, Ker-Chiah Wai, Maggie To, Ashley Jayapaul</i> <i>Chair: Angus Buchanan, IASSIDD Vice-President, Asia-Pacific Region</i>
10.15-11.15	Various room Convention A-B	Concurrent sessions 4 Academy Board Meeting*
11.30-12.30	Various room	Concurrent sessions 5
12.30-13.30	Orchid, Floor 3	Lunch break
13.30-14.30	Convention A-B Convention C	Plenary lecture 4: A. Realizing Inclusive and Equitable Quality Education for All: Challenges and Opportunities of SDG4-Education 2030 <i>Maki Hayashikawa</i> <i>Chair: Vianne Timmons, Past President, IASSIDD</i> <i>Co-Chair: Suparat Ekasawin</i> B. Zika Virus: Ecology, Epidemiology, and Disease Associations

Time	Room	Program
		<i>David Harley</i> <i>Chair: Ivan Brown, IASSIDD Vice-President, Education and Policy; Director, IASSIDD Academy</i> <i>Co-Chair: Siriporn Kanchana</i>
14.45-15.45	Various room	Concurrent sessions 6
16.00-17.00	Convention hall foyer	Poster presentation 2
	Convention A-B Garden 3 Convention C Peony 3 Peony 4 Peony 11-12 Peony 6- 7	SIRG Meetings Additional Meeting SIRG : Family SIRG : Quality of Life SIRG : Inclusive Education SIRG : Challenging Behavior and Mental Health SIRG : Down Syndrome Membership committee

* for The IASSIDD committee only

16 November

Time	Room	Program
07:30-09:00	Breakfast room, Peony 6-7	Academy: Nepal breakfast meeting*
09.00-10.00	Various room	Concurrent sessions 7
10.15-11.15	Various room	Concurrent sessions 8
11.30-12.30	Convention A-B	Closing ceremony
12.30-13.30	Orchid, Floor 3	Lunch break

* for The IASSIDD committee only

Concurrent Sessions

CONCURRENT SESSIONS 1: TUESDAY NOVEMBER 14, 11.15--12.15

Convention A-B	Garden 3	Convention C	Peony 3	Peony 4	Peony 11-12	Peony 6-7
RT 1. Building Self-Advocacy Capacity for People with Intellectual and Developmental Disabilities in the Asia/Pacific Region	Sym 1. Measuring outcomes (Tr.1 Model)	Sym 2. Organizational practice and cultures (Tr.1 Model)	Sym 1. Overviews of successful living around the world (Tr.2 Community)	Sym 2. Facilitating successful living in communities (Tr.2 Community)	Sym 1. Inclusive Education (Tr.3 Education)	Sym 1. Mental health (Tr.4 Health)
Trevor Parmenter, Kuo-Yu Wang	Chair: Valerie Bradley Co-chair: Voravate Chonlasin	Chair: Vorasuk Shotelersuk Co-chair: Alice Schippers	Chair: Angela Henderson Co-chair: Chandhita Pruksananonda	Chair: Alexandra Katherine Duncan Co-chair: Premvadee Densiriaksorn	Chair: Jeffrey Chan Co-chair: Thipwimol Tim-Aroon	Chair: Somchai Chakapan Co-chair: Deborah Kinnear
	Measuring Outcomes of Service Provision: The Development of an Outcomes Measure <u>Stella Koritsas, Nick Hagiliassis, Celeste Cuzzillo</u>	Rethinking Disability Certifying and Entitled Welfare Services Delivering: An Application of ICF in Taiwan <u>Edward Chun-Fan Lai</u>	Persons with Intellectual Disabilities in the 20th Century of China <u>Jing Li, Patricia O'Brien, Trevor Parmenter, Marie Knox</u>	Benefits and Barriers to Participation in Organized Physical Activity for Australian Children with a Disability <u>Nicole Papadopoulos, Nicole Rinehart, Jane McGillivray, Helen Skouteris, Jennifer McGinley, Katrina Williams, Andrew Whitehouse, Simon Moss</u>	Effectiveness of the Short Course on Learning Disabilities on Teachers' Perceptions of Inclusion of Students with Learning Disabilities <u>Anoma Alwis</u>	Temporal and Geographic Trends in Antipsychotic and Antidepressant Prescribing in Children and Adults with Intellectual Disabilities, and Children with Autism throughout Scotland, 2009-2015 <u>Angela Henderson, Deborah Kinnear, Jill Morrison, Sally-Ann Cooper, Linda Allan, Colin McCowan, Kevin Ross, Paula McSkimming, Marian Okon</u>

Convention A-B	Garden 3	Convention C	Peony 3	Peony 4	Peony 11-12	Peony 6-7
	<p>Measuring Goal Realization Associated with Disability Services and Supports: Initial Evidence for a New Tool <u>Nick Hagiliassis, Stella Koritsas, Celeste Cuzzillo</u></p> <p>Success Factors for Matching Different Types of Disabilities to Work: Two Case Verifications of Work Continuance Support A Type Office in Japan <u>Muneyuki Nakachi, Ayaka Nakao, Hiroo Funaya, Suguru Tamaki</u></p> <p>Measuring Progress Toward the Goals in the CRPD: The Need for State Structures and Policies to Measure Outcomes <u>Valerie Bradley, Alexandra Bonardi</u></p>	<p>Staff Perceptions of the Purpose, Frequency and Organizational Focus for Senior Manager Visits to Services, in the UK <u>Roy Deveau, Andrew McDonnell</u></p> <p>Group Home Culture Within and Across Organizations <u>Lincoln Humphreys, Christine Biqby, Teresa Iacono, Emma Bould</u></p> <p>The Relationship Between Group Home Culture and Quality of Life Outcomes for People with Intellectual Disabilities <u>Lincoln Humphreys, Christine Biqby, Teresa Iacono, Emma Bould</u></p>	<p>The Process of the Formulation of Prefectural Regulations for People with Disabilities in Oita Prefecture, Japan <u>Emiko Nagaoka Tanaka (Nagaoka)</u></p> <p>Accessibility For Person with Disabilities in Banda Aceh District Post Earthquake and Tsunami 2004 <u>Harri Santoso, Zainal Abidin Soeradja</u></p> <p>Pre-vocational (PV) Programme Teachers' Perspectives: Developing, Implementing and Evaluating a School-based Enterprise (SBE) Programme in Secondary Schools <u>Syazwina Mahmod, Teng Leong Koay, Rohani Mat Zin, Rosmawijah Jawawi</u></p>	<p>Aligning with the Flow of Control: A Classic Grounded Theory Study of Choice and Control in the Lives of People with Intellectual Disabilities <u>Eileen Carey</u></p> <p>Importance of Aural Rehabilitation in Management of Conduct Problems in Person with Intellectual Disability: A Case Report <u>Ansari Mohammad Shamim</u></p> <p>IDD Artmaking in Canada <u>Alexandra Katherine Duncan</u></p>	<p>The Positive Impact on Including Students with Intellectual Disabilities in Schools <u>Ghaleb Alnahdi</u></p> <p>Contradictions as Drivers for Improving Inclusive Practices in Finland <u>Birgit Johanna Paju</u></p> <p>Toward Inclusive Education for Students with Disabilities: The Gap Between Educational Law and Real Practice <u>Tavee Cheausuwantavee</u></p>	<p>Risk Factors for Depression in Adults with Intellectual and Developmental Disabilities: A Five-Year Longitudinal Study in the USA <u>Kelly Hsieh, Tamar Heller, Sumithra Murthy</u></p> <p>Preliminary Study of Self-Esteem and Subjective Well-Being in Persons with Autism Spectrum Disorders <u>Michio Kojima</u></p>

CONCURRENT SESSIONS 2: TUESDAY NOVEMBER 14, 14.30-15.30

Convention A-B	Garden 3	Convention C	Peony 3	Peony 4	Peony 11-12	Peony 6- 7
RT 2. Building Research Capacity in the Asia/Pacific Region in the Field of Intellectual and Developmental Disabilities	Sym3. Interventions (Tr.1Model)	Sym4: Innovative interventions (Tr.1Model)	Sym3. Successful families and siblings (Tr.2Community)	Sym4. Successful families and parents (Tr.2Community)	Sym2. Perspective of inclusive education for children with ID or ASD in Japan (Tr.3Education)	Sym2. Mental health and ASD (Tr.4Health)
Trevor Parmenter, Kuo-Yu Wang	Chair: Jeffrey Chan Co-chair: Chandhita Pruksananonda A Randomized Controlled Trial of the Effects of Caregiver Training in Mindfulness-Based Positive Behavior Support (MBPBS) vs. Positive Behavior Support (PBS) <u>Jeffrey Chan, Carrie L. McPherson, Nirbhay N. Singh</u> Peer Mediation as a Societal Support Model by and for People with Intellectual and Developmental Disabilities <u>Jee Ching Pang, Sau Cheong Loh, Ahmad Zabidi bin Abdul Razak</u>	Chair: Vorasuk Shotelersuk Co-chair: Preethy Samuel Social Enterprise as a Means of Promoting Vocational Opportunities for People with Intellectual Disabilities <u>Keith McVilly, Peter Smith, Jane McGillivray, Jeffrey Chan</u> Individualised Supported Living - A New Approach to Planning for Accommodation and a Full Life in the Community <u>Keith McVilly, Errol Cocks, Patricia O'Brien, Stian Thoresen, Allyson Thomson, Meredith Prain, Friederike Gadow, Jenny Crosbie</u>	Chair: Alice Schippers Co-chair: Panida Ratanapairoj Challenges Faced by Siblings of Adults with Intellectual Disability (ID) <u>Chloe Liew</u> Negotiating the present; fearing the future: Narratives of mothers and grandmothers of children with cerebral palsy in Sri Lanka <u>Shyamani Hettiarachchi, Gopi Kitnasamy, Dilani Gopi, Fathima Shamra, Chamara Bandara</u>	Chair: Kate Simpson Co-chair: Premvadee Densiriaksorn Developmental Needs of Family Caregivers of People with Disabilities <u>Jillian Graves, Christina Marsack</u> The Lived Experience of Parents with a Young Adult with Intellectual Disability: A Snapshot of the Duality of Personal Growth and Challenging Times <u>Murray Rieck, Jane Shakespeare-Finch, Mariann Mårtsin, Marie Knox</u>	Chair: Takuya Miura Co-chair: Amporn Benjaponpitak Current Status and Issues in Support System for Children with ASD <u>Takuya Miura, Hironobu Shimoda, Junya Kawaike</u> Condition of Inclusive Childcare in Japan and Problems of Counseling about School Attendance <u>Chiaki Masu, Akiko Hayashi, Aki Doyama, Kaori Hosokawa</u>	Chair: Somchai Chakapan Co-chair: Darren Hedley Anxiety Symptomatology in Young Children on the Autism Spectrum <u>Deb Keen, Dawn Adams, Jacqueline den Houting, Kate Simpson, Jacqueline Roberts</u> Suicidality In Adults with Autism Spectrum Disorder (ASD) <u>Darren Hedley</u>

Convention A-B	Garden 3	Convention C	Peony 3	Peony 4	Peony 11-12	Peony 6- 7
	<p>Pairing an Avatar and a Cognitive System to Facilitate Access to the NDIS for People with ID <u>Sarah Glencross, Jonathan Mason, Mary Katsikitis</u></p> <p>Steps to Effective Problem-Solving: A Randomized Clinical Trial <u>Sarah Ailey</u></p>	<p>Establishing and Maintaining Couplehood as Perceived by Couples with Intellectual and Developmental Disabilities: Implications for the Provision of Support <u>Ran Neuman, Shunit Reiter</u></p> <p>SAHK Autism Support Service: A Support Model for Adults with Autism Spectrum Disorder (ASD) <u>Katherine Tong, Man-Chee Chan</u></p>	<p>Support Groups and Family Resilience for Intellectual Disabilities in Thailand: A Systematic Review <u>Donald Persons</u></p>	<p>Authoritarian Parenting of Chinese Mothers of Children with and without Intellectual Disability <u>Hui Su</u></p> <p>Does Parent's Desire for Change Influence their Child's Participation? <u>Kate Simpson, Dawn Adams, Deb Keen</u></p>	<p>A Report on the Actual State of Inclusive Education in Elementary Schools and on Requests for and Provision of Assistance to Children <u>Chihiro Sugioka, Kiyoshi Otomo, Takahiro Watanabe</u></p> <p>Status of the Inclusive Education System in Middle Schools <u>Ryo Kumagai, Soichi Hashimoto, Michio Kojima</u></p>	<p>Useful Screening Tools for Neurodevelopmental Disorders <u>Amani Hassan</u></p>

CONCURRENT SESSIONS 3: TUESDAY NOVEMBER 14, 15.45-16.45

Convention A-B	Garden 3	Convention C	Peony 3	Peony 4	Peony 11-12	Peony 6- 7
RT 3. How to get your Research Published: Guidance and Steps Involved in Getting a Paper Published Brian Salmons, John Rose	RT 4. Getting Things Changed: Everyday Support Interactions and Why They Matter Valerie Williams	Sym5. Support to children and families (Tr.1Model) Chair: Vorasuk Shotelersuk Co-chair: Tamar Heller	Sym5. Successes in Autism (Tr.2Community) Chair: Christina Marsack Co-chair: Panida Ratanapairoj	Sym6. Quality of life (Tr.2Community) Chair: Kenneth Poon Co-chair: Premvadee Densiriaksorn	Sym3. Perspective of special need education for Children with ID or ASD in Japan (Tr.3Education) Chair: Takuya Miura Co-chair: Noppawan Sriwongpanich	Sym3. Psychological considerations in exceptional circumstances (Tr.4Health) Chair: Somchai Chakapan Co-chair: Jeffrey Martin
		Impact of Family Support on Caregiver Well-Being <u>Tamar Heller, Caitlin Crabb, Randall Owen</u>	Fostering Integration and Inclusivity by Supporting the Service Needs of Adult Children with Autism Spectrum Disorder <u>Christina Marsack, Arlene Weisz</u>	Individual Supported Living (ISL) as a Quality Framework to Create and Promote "One's Own Home" <u>Stian H Thoresen, Errol Cocks, Allyson Thomson</u>	Behavioral Support and Lesson Creation for Children with an ASD: Self-Monitoring to Promote Behavior Improvement <u>Hironobu Shimoda, Kiyoshi Otomo, Takuya Miura</u>	Attentional Bias towards Positive and Negative Images amongst Offenders and Non-Offenders with Intellectual Disabilities <u>Susan Sadek, Matthew Daniel, Peter E. Langdon</u>

Convention A-B	Garden 3	Convention C	Peony 3	Peony 4	Peony 11-12	Peony 6-7
		<p>Evaluating the Effectiveness of Support Programme for Siblings of Persons with Intellectual and Developmental Disabilities in Singapore over a Five-Year Period <u>Yu Ping Tay, Shine Koh</u></p> <p>Parent Researcher Collaborations and Exploring the Lived Experience Through Story-Telling <u>Murray Rieck, Jane Shakespeare-Finch, Mariann Märtsin, Marie Knox</u></p> <p>Play and Children with Autism Spectrum Disorder <u>Piret Elina Vermilä</u></p>	<p>Parental Intervention on Daily Living Skills Using Visual Prompt Approach for Children with Autism Spectrum Disorder <u>Nurafizzah Hj Muhd Khairun Nizam, Teng Leong Koay, Hjh Rohani Hj Mat Zin, Hjh Dya Norzaiham Midawati Hj Abdullah</u></p> <p>The Invisible Children: Needs for School Age Special Siblings of Children with Intellectual Disability/Autism in Taiwan <u>Chun-Yu Chiu</u></p> <p>Job Satisfaction and Quality of Life in Autism <u>Darren Hedley, Mirko Uljarevic, Mathilda Wilmot, Jennifer Spoor, Amanda Richdale, Cheryl Dissanayake</u></p>	<p>Symptoms of Psychological Distress and Family Quality of Life among Subgroups of Children Attending Early Intervention Programs <u>Kenneth Poon, Nina Xin Chong, Huichao Xie, Rebecca Bull</u></p> <p>Using Family Quality of Life Data to Improve Practice and Family Life: A Look at Two Ways to Consider the Results <u>Ivan Brown, Dana Roth</u></p> <p>Predictors of Family Quality of Life for Families of Children with Intellectual Disabilities <u>Preethy Samuel</u></p>	<p>Research Trends in the Reading and Writing Skills of Children with Intellectual Disabilities in Japan <u>Mariko Maeda, Michio Kojima</u></p> <p>Sports Instruction for Children with Mental Disabilities — Efforts Aimed at the Tokyo 2020 Paralympic Games <u>Takahiro Watanabe, Soichi Hashimoto, Akiko Hayashi, Ryo Kumagai</u></p> <p>Counseling support for students with ID and mental illness <u>Aki Doyama, Soichi Hashimoto, Chiaki Masu, Chihiro Suqioka</u></p>	<p>Vulnerability and Strengths of Disaster-Affected Children with Developmental Disabilities: Experiences from the 2016 Kumamoto Earthquakes, Japan <u>Hiroko Furuta, Yukari Ayado</u></p> <p>The Psychology of Paralympians <u>Jeffrey Martin</u></p>

Convention A-B	Garden 3	Convention C	Peony 3	Peony 4	Peony 11-12	Peony 6-7
	RT 5. Assessment: Quantifying Need, Allocating Resources, And Measuring Quality--Nation-State Perspectives	Sym6. Parents with intellectual disability and child protection (Tr.1Model)	Sym7. Quality of life around the world (Tr.2Community)	Sym8. Facilitating successful employment, Part 1 (Tr.2Community)	Sym4. Teaching Methods – Part I (Tr.3Education)	Sym4. Health care (Tr.4Health)
	John Agosta, Alexandra Bonardi, Helene Dore	Chair: Margaret Spencer Co-chair: Suparat Ekasawin	Chair: Mian Wang Co-chair: Panida Ratanapairoj	Chair: Vimallan Manokara Co-chair: Premvadee Densiriaksorn	Chair: Rhonda Faragher Co-chair: Chadapim Phoasavasdi	Chair: Tamar Heller Co-chair: Donruedee Srisuppaphon
		Prevalence of Child Protection Outcomes in Families Led by Parents with Cognitive Impairment in Canada <u>Maurice Feldman, David McConnell, Marjorie Aunos, Laura Pacheco</u> Domestic Violence, Mothering with Intellectual Disability and the Child Protection System <u>Margaret Spencer, Susan Collings, Angela Dew, Erin Cooney</u> “If I had this support before I would still have my first child with me”: Supporting Parents with Intellectual Disability in the Child Protection System <u>Susan Collings, Angela Dew, Margaret Spencer, Erin Cooney, Leanne Dowse</u>	Korean Family Quality of Life: Validating the Family Quality of Life Scale and Identifying Important Predictors <u>Mian Wang, Jiyeon Kim</u> Quality of Life: Towards a Shared Framework for Intersectoral Collaboration <u>Jessica De Maeyers, Hanne Vandenbussche, Maarten De Schrijver</u> Family Quality of Life of Adults with ID in Singapore <u>Dalvin Jit Kour Sidhu, Kenneth Poon</u>	Pathways to Inclusion <u>Vanda Anne Wiczorkowski</u> Development of the Work Support Profile (WSP)- An Instrument to Assess Support Needs of Adults with Intellectual Disabilities in Sheltered Employment <u>Vimallan Manokara, Yvonne Lee, Manisha Kishore, Sivananda Penchaliah, Hoili Lim, Jeffrey Chan, Peter Tan, Shyh Shin Wong, Jing Yi Ng, Ai Jia Gwee, Clara Tan</u> Small Business Enterprises for Adults with Intellectual Disabilities and High Support Needs: Innovative and Entrepreneurial Approaches to Meaningful Employment <u>Stian H Thoresen, Errol Cocks, Allyson Thomson</u>	Inclusive Teaching in Maldives: Factors Influencing Teacher Beliefs and Attitudes <u>Fathmath Nishan, Koay Teng Leong, Rohani Matzin, Rosmawijah Jawawi</u> Teaching Methods to Enhance the Quality of Education for Children with Intellectual Disabilities <u>Abdul Hakim Hasan Hawach</u> Applying Educational Quality of Life (EQOL) to Inclusive Mathematics Teaching of Students with Down Syndrome <u>Rhonda Faragher</u>	Prevalence and Types of Unexplained Symptoms in Adults with Intellectual Disabilities <u>Deborah Kinnear, Martin Osugo, Jill Morrison, Linda Allan, Sally-Ann Cooper</u> Transforming Healthcare with People with Disabilities <u>Sarah Ailey, Tamar Heller, Molly Bathie</u> Better Health Outcomes for People with Intellectual Disabilities <u>Susan Carol Hayes, Philip James Shackell</u>

Convention A-B	Garden 3	Convention C	Peony 3	Peony 4	Peony 11-12	Peony 6- 7
		Peer Education - A Way to Talk about the Right to be Sexual: A Positive Pathway to Parenting <u>Patsie Frawley</u>	The Study and Practice about Quality of Life and Support System for Person with IDD In China <u>Jiacheng Xu, Robert L. Schalock, Mian Wang</u>	The Characteristics of Sustained Open Employment for People with Disabilities: The Views of Persons with Disabilities, Their Caregivers and Employers <u>Vimallan Manokara, Jeffrey Chan</u>		Racial and Ethnic Disparities in Perceived Barriers to Health Care Among U.S. Adults with Intellectual and Developmental Disabilities <u>Henan Li, Susan Parish, Sandra Magaña, Miquel Morales</u>

CONCURRENT SESSIONS 5: WEDNESDAY NOVEMBER 15, 11.30-12.30

Convention A-B	Garden 3	Convention C	Peony 3	Peony 4	Peony 11-12	Peony 6- 7
RT 6. Do People with Developmental Disabilities need Specialist Inpatient Services?	RT 7. Specialist Community-based Services for Adults with Intellectual Disability: Are we in Shangri-La or Cloud Cuckoo Land?	Sym7. Quality of life (Tr.1Model)	Sym9. Facilitating successful employment, Part 2 (Tr.2Community)	Sym10. Individuals and attitudinal issues (Tr.2Community)	Sym5. Teaching Methods – Part II (Tr.3Education)	Sym5. Health status (Tr.4Health)
Salim Jeffrey Razak, Adnan Qureshi	Trevor Chun Wai Chan, Ken Courtenay	Chair: Jennifer Zarcone Co-chair: Suparat Ekasawin	Chair: Germain Weber Co-chair: Panida Ratanapairoj	Chair: Angela Hassiotis Co-chair: Donruedee Srisuppaphon	Chair: Rhonda Faragher Co-chair: Chadapim Phoasavasdi	Chair: Deborah Kinnear Co-chair: Amporn Benjaponpitak
		People with an Acquired Brain Injury: An Interpretative-Phenomenological Analysis of their Quality of Life <u>Sofie Vindevogel, Claudia Claes</u>	Employment Security of Students with Intellectual Disability Who Have Successfully Completed Their Education in a Vocational Training Institute <u>Shantha Kumara</u>	Attitudes toward Individuals with Intellectual Disabilities across Asia: A Systematic Review <u>Karen Pooh</u>	The Interpretations and Experiences of Visual Clutter in the Classroom from the Perspectives of Students with a Diagnosis of Autism Spectrum Disorder (ASD) <u>Hannah Zazzi</u>	Health Status and Health-Related Physical Fitness in Thai Students with Intellectual Disability <u>Premvadee Densiriaksorn</u>

Convention A-B	Garden 3	Convention C	Peony 3	Peony 4	Peony 11-12	Peony 6- 7
		<p>An International Approach to Align UNCRPD Articles with Quality of Life Indicators and Support Strategies <u>Marco Lombardi, Hanne Vandenbussche, Claudia Claes, Bob Schalock</u></p> <p>Disability Policy Evaluation: Systems Thinking and Quality of Life <u>Claudia Claes</u></p> <p>Family Quality of Life and the Expanding Connections Model: Practical Suggestions for Practice and Policy <u>Meaghan Edwards</u></p>	<p>Research Supported Practices in Promoting Employment Outcomes <u>Dalun Zhang</u></p> <p>The Need to Bridge the Divide: Assessment of Job Satisfaction in Sheltered Workshops <u>Andreas Kocman, Germain Weber</u></p> <p>The Key Factors for Improving QWL (Quality of Working Life) for People With Disabilities in Work Continuance Support B Type Office in Japan - Through “Temil Project” and “Equalto Project” <u>Ayaka Nakao, Hiroo Funaya</u></p>	<p>Key Professionals’ Attitude towards People with Intellectual Disabilities and Inclusion: An Indonesian Perspective <u>Restu Handoyo, Afia Ali, Katrina Scior, Angela Hassiotis</u></p> <p>Loneliness in People with Intellectual and Developmental Disorders (IDD) across the Lifespan: A Systematic Review of Prevalence and Interventions <u>Alexandra Petroutsou, Afia Ali, Angela Hassiotis</u></p> <p>Dealing with Decision-Making and Different Opinions in a Self-Advocacy Group from Sweden <u>Erik Dahlman, Ulrika Dahlgren, Susan Korsman</u></p>	<p>Examining Generalization Performance in a Conditional Discrimination Task for Learners with Moderate to Severe Intellectual and Developmental Disabilities <u>Mo Chen</u></p>	<p>Psychosocial Factors Predicting Internalizing Problems and Life Satisfaction in Young Adults with Mild Intellectual Disabilities <u>Chris Tak Wee Wong, Melanie Jiamin Liang, Ker-Chiah Wei, Diana Ruth Andrea Barron, Iliana Magiati</u></p> <p>Multi-Morbidity in a Cohort of Adults with intellectual Disabilities, with and without Down Syndrome <u>Deborah Kinnear, Jill Morrison, Linda Allan, Angela Henderson, Elita Smiley, Sally-Ann Cooper</u></p>

CONCURRENT SESSIONS 6: WEDNESDAY NOVEMBER 15, 14.45-15.45

Convention A-B	Garden 3	Convention C	Peony 3	Peony 4	Peony 11-12	Peony 6- 7
RT 8. Disability Law, Policy, and Services within the Asian Context	RT 9. Families of Children with Autism Spectrum Disorder (ASD) Across Cultures: Diagnosis, Adaptation and Intervention	Sym8. Challenging behaviors (Tr.1Model)	Sym9. Decision making (Tr.1Model)	Sym11. Rights and CRPD (Tr.2Community)	Sym6. Human Life Topics Needed in Special Education (Tr.3Education)	Sym6. Innovative interventions for health-related issues (Tr.4Health)
Kenneth K. Poon, Somsri Tritiphen, Dalvin jit Kour Sidhu, Mo Chen	Sandy Magana, Naomi Ekas, Yue Xu	Chair: Ken Courtenay Co-chair: Suparat Ekasawin	Chair: Susan Balandin Co-chair: Voravate Chonlasin	Chair: Fiona Redgrove Co-chair: Donruedee Srisuppaphon	Chair: Yueh-Ching Chou Co-chair: Chadapim Phoasavasdi	Chair: Janet Finlayson Co-chair: Premvadee Densiriaksorn
		Intensive Support Team Model in Managing Challenging Behaviors in People with Intellectual Disabilities <i>Ken Courtenay, Bhatika Perera</i>	Association between Social Functioning and Intellectual Quotient of Patients with Autistic Like Traits <i>Shuichi Watanabe</i>	Whose right? And who's right? UNCRPD and the Dilemma of Rights for Young Adults with Intellectual Disability <i>Fiona Redgrove</i>	Evaluation of a Sexual Health Program for Parents and Service Workers of Adults with ID <i>Yueh-Ching Chou, Teppo Kröger</i>	Therapy Sessions in Adolescents with Autism Spectrum Disorder Reduce Stress-Related Salivary Alpha Amylase Levels <i>Jessie Poquerusse, Peipei Setoh, Stefano Cainelli, Paola Venuti, Gianluca Esposito</i>
		Management Support for Staff in Community Services for People with ID and Challenging Behaviors <i>Roy Deveau, Peter McGill</i>	"She can never leave me now": Participants Perspectives on Volunteers Supporting Decision Making <i>Patsie Frawley, Susan Balandin, Joanne Watson</i>	Achieving Inclusive Societies and Sustainable Development for People with Intellectual or Developmental Disabilities using Assistive Technology <i>John Owuor, Fiona Larkan</i>	Study on Life and Death Education Training and Research for People with Intellectual Disabilities <i>Vincent Lau</i>	Development of a Manual for Extended Brief Intervention for Alcohol Misuse in Adults with Mild to Moderate Intellectual Disabilities Living in the Community <i>Christos Kouimtsidis, Katrina Scior, Gianluca Baio, Rachael Hunter, Angela Hassiotis</i>
		Using Flipped Classroom, Motivational Interviewing and Process Mapping to Facilitate Practice Improvement in Health Staff Working with Patients with Intellectual Disability (ID) and Challenging Behaviours <i>Natalie Ong, Gail Tomsic</i>	The Role of Practice Models in Implementing Decision-Making Support <i>Joanne Watson, Patsie Frawley, Susan Balandin</i>	The Role of Self Advocacy in My Life as President of Self-Advocacy Organization <i>Felicia Yann Yann Fang, Jee Ching Pang</i>	Verbal Violence among Children with Intellectual Disabilities: Running an Intervention Program to Change the Culture of Verbal Discourse <i>Nirit Karni-Vizer</i>	Lycra Splinting Garments for People with Intellectual Disabilities Who Fall Due to Balance and/or Gait Issues: A Feasibility Study <i>Janet Finlayson</i>

Convention A-B	Garden 3	Convention C	Peony 3	Peony 4	Peony 11-12	Peony 6- 7
		A Successful Approach to Admission and Discharge Planning for Patients with ID and Challenging Behaviours: A Case Study. <u>Gail Tomsic, Natalie Ong</u>	Volunteers Supporting People with Disability to Make Decisions <u>Susan Balandin, Joanne Watson, Patsie Frawley</u>	Self-Advocacy and My Work <u>Suet Ming Wong, Jee Ching Pang</u>	Teaching Music for Children with Special Needs Based on Kodaly's Approach at Chulalongkorn University Demonstration School <u>Narutt Suttachitt</u>	Effects of the TEDA4I Program on Child Development of Children with Development and Intellectual Disabilities <u>Panida Ratanapairoj</u>

CONCURRENT SESSIONS 7: THURSDAY NOVEMBER 16, 9.00-10.00

Convention A-B	Garden 3	Convention C	Peony 3	Peony 4	Peony 11-12	Peony 6- 7
RT 10. The Arts: Creating Discourse and Dialogue about New Opportunities in Education, Daily Living and Community Access	RT 11. Personal Values and Cultural Beliefs in Quality of Life	Sym10: Rights of PWID (Tr.1Model)	Sym11: Communication and restrictive practice (Tr.1Model)	Sym12: Social networks and communication (Tr.2Community)	Sym7: Developing Opportunities and Advocacy (Tr.3Education)	Sym7: Prenatal and neonatal health (Tr.4Health)
Esther Joosa, Meng Ee Wong, Yonglun Liu	Alice Schippers, Ivan Brown	Chair: Valerie Bradley Co-chair: Amporn Benjapolptak	Chair: Jeffrey Chan Co-chair: Panida Ratanapairoj	Chair: Fiona Rillotta Co-chair: Chosita Pavasuthipaisit	Chair: Michelle Proyer Co-chair: Chadapim Phoasavasdi	Chair: Masauso Chirwa Co-chair: Premvadee Densiriaksorn
		Procreative Injustice. The Access to Reproductive Rights for Women with ID in Poland <u>Agnieszka Wolowicz-Ruszkowski</u>	Analysis of Underlying Diseases of Persons in Institutions for Severe Motor and Intellectual Disabilities (Smid) from 1986 To 2016 <u>Tadashi Matsubasa, Katsumi Mita, Satoshi Kimiya</u>	Enhancing social networks of adults with intellectual disabilities with social media use training <u>Fiona Rillotta, Pammi Raghavendra, Ruth Walker, Susan Balandin, Emma Grace, Greq Carey</u>	Refugee Borderlands – People of Concern with Disabilities: Educational Prospects Along The Thai-Myanmar Border <u>Michelle Proyer</u>	Disabled Women's Access to Maternal and Child Healthcare in Zambia <u>Masauso Simon Chirwa</u>

Convention A-B	Garden 3	Convention C	Peony 3	Peony 4	Peony 11-12	Peony 6-7
		<p>The Universal Right to Science: An Important Connection with the Convention on the Rights of People with Disabilities <u>Valerie Bradley</u></p> <p>Inclusion in Germany: Theoretical Foundation and Practical Experience in Different Areas of Life <u>Harald H. Goll</u></p> <p>Applying Article 12 of the UNCRPD within Guardianship Practice in Victoria, Australia <u>Joanne Watson, Julie Anderson</u></p>	<p>Survey of UK based Organisations Responses to New Government Policy on Restrictive Practices and People with ID. <u>Roy Deveau, Sarah Leitch</u></p> <p>An Organisation-Wide Approach to Implementing Key Word Sign among Disability Support Workers in Singapore <u>Eva Wei-Lyn Loh, Jeffrey Chan</u></p>	<p>Perceptions of Retail Customer Service Communication with Customers with Complex Communication Needs (CCN) who use Augmentative and Alternative Communication Systems (AAC). <u>Susan Elizabeth Taylor, Erin E Wilson, Kevin Murfitt, Susan Balandin</u></p> <p>Are Vocabulary Choices the Same in Easy English Documents in Different Parts of the World? <u>Cathy Basterfield</u></p>	<p>Research on Parental Participation and Self-efficacy in Early Intervention for Children with Developmental Disabilities in China <u>Wen Sun, Yumei Sun</u></p> <p>Exploring the Views of Students with Moderate Intellectual Disability in Special Education Settings on their Quality of Life <u>Tiffany Wang, Vimallan Manokara, Rachel Ng, Jeffrey Chan</u></p> <p>The Best Defense is a Good Response: Reacting to Offensive Sentences for People with Disability and their Families <u>Chun-Yu Chiu, Yi Ning Tung, Chao-Fu Hsu, Li-Chi Yu</u></p>	<p>Postpartum Emergency Department Use among Mothers with Intellectual and Developmental Disabilities <u>Monika Mitra, Ilhom Akobirshoev, Susan Parish</u></p> <p>Is Preterm Birth and Intra-Uterine Growth Retardation More Common in Western Australian Children of Immigrant Backgrounds? <u>Ifrah Hassan Abdullahi</u></p>

CONCURRENT SESSIONS 8: THURSDAY NOVEMBER 16, 10.15-11.15

Convention A-B	Garden 3	Convention C	Peony 3	Peony 4	Peony 11-12	Peony 6-7
RT 12. A Person-Centered Care and Engagement Model for Improving and Sustaining Outcomes in Any (Psychiatric) Setting and All Populations Laurel E Blackman	DM 1. Art Makes Us Human - Support Model of Societal Participation through Arts by Easy Read Michele Chung	DM 3. The Integrated Supports Planning Calendar: Planning for One's Life Beyond the Realm of Paid Services. Alena Vazquez, John Agosta	Sym12. Policies and practices supporting sustainable community living (Tr.1Model) Chair: Kuo Yu Wang Co-chair: Voravate Chonlasin	Sym13. Forensic – victims and perpetrators (Tr.2Community) Chair: John Rose Co-chair: Panida Ratanapairoj	Sym8. Transitions from School to Work or Post-Secondary Education (Tr.3Education) Chair: Fiona Rillotta Co-chair: Chadapim Phoasavasdi	Sym8. Decisions about diet and oral health (Tr.4Health) Chair: Janet Finlayson Co-chair: Premvadee Densiriaksorn
	DM 2. Voting: Our Rights to Full Participation Wai Ying Emily Fung, Tsun Kit Chan, Tak Hung Chow, Yim Fong Au	DM 4. Teaching Music for Students with Special Needs Based on Kodaly's Approach at Chulalongkorn University Demonstration School Narutt Suttachitt	The Poverty Problem of People with Disabilities and Policy Issues around Living Allowance: The Case of Taipei <u>Yu-Ju Wang, Kuo Yu Wang</u> I have the right to choose where to live': Policies and Practices on Living in the Community for People with ID in Taiwan <u>Yueh-Ching Chou, Teppo Kröger</u>	Verbal Violence Towards People with Intellectual Developmental Disabilities <u>Nirit Karni-Vizer</u> Redesigning Forensic Services for People with Intellectual Disabilities <u>John Rose, Gemma Unwin</u>	Supporting Persons with DD/ID in Postsecondary Education <u>Robert A. Stodden</u> The University Practicum Placement Experience of a Student with Intellectual Disability <u>Fiona Rillotta, Lorraine Lindsay</u>	Critical Review of Dietary and Nutritional Intake Interventions for People with Intellectual Disabilities: Accessible and Objective Outcome Measures <u>Hassan Al Attar</u> Promoting Oral Health in Students with Intellectual and Developmental Disabilities: Exploring Students' Experiences at the All Smiles Learning Center, Chiang Mai, Thailand <u>Patcharawan Srisilapanan, Jeffrey Chan, Colin Hudson</u>

Convention A-B	Garden 3	Convention C	Peony 3	Peony 4	Peony 11-12	Peony 6- 7
			<p>A Case Study of a Municipal Process for Distribution of Resources within Disability Services <u>Per Arvidsson</u></p> <p>Using Supports Budgets to Manage Sustainability in IDD Support Systems in an Uncertain Future <u>Alena Vazquez</u></p>	<p>Fitness to Plead: Scientific Aids to Promote Inclusion <u>Victor Makupa</u></p> <p>Sagamihara Tragedy and Challenges of Community Living <u>Osamu Nagase</u></p>	<p>Indicators for Employment Transition Outcomes for Chinese School Leavers with Intellectual / Developmental Disability <u>Tianxi Xu, Juan Tang, Jianghua Lei</u></p> <p>A Transdisciplinary and Socio-Ecological Framework to Evaluate Inclusion in Practice in the Workplace: A Singapore Case-Study <u>Esther Joosa, Devi Kanniga, Hasinira Binte Talib, Grace Teo, Wendy Yeo, Veeramari Gomathy</u></p>	<p>Poor Oral Health in Adults with Intellectual Disabilities and Its Determinants <u>Deborah Kinnear, Jill Morrison, Linda Allan, Angela Henderson, Lorna MacPherson, Andrea Sherriff, Janet Finlayson, Sally-Ann Cooper</u></p>

Poster sessions

POSTER PRESENTATIONS 1

TUESDAY NOVEMBER 14, 17.00-18.00

Location: Foyer of the Ambassador Hotel

POSTER PRESENTATIONS 2

WEDNESDAY NOVEMBER 15, 16.00-17.00

Location: Foyer of the Ambassador Hotel

LIST OF POSTERS

Track 1. Support models and strategies

PM-01 - The Strategies of Occupational Therapists Implementing Family-centered Approach

Hsin Pei Huang, Chiou Shiue Ko

PM-02 - Assessing Manual Dexterity in Adults with Intellectual Disability (ID) and Developing Singapore Norms of the Box and Block Hand Function Test -A Study on Adults with Moderate ID in Singapore.

Reena Ariyapillai Rajagopal, Manikandan Palanivel

PM-03 - Actual Condition and Problems of ASD Support System: The Role of Okayama Support Center for People with ASD

Daisuke Imade, Shigeru Suemitsu

PM-04 - Detailed Statistics of “Survey on Persons with Difficulties in Daily Lives” Held in 2011 Japan: Children and Persons with Autistic Disabilities without Disability Registration.

Yayoi Kitamura

PM-05 - Creation of a Scale for the Assessment of Social and Behavioral Development in Preschool Children

Hideyo Goma, Shun Tanaka, Natsumi Maruo, Tomomi Ikeda, Kazuhisa Inoue, Toshihiro Kato, Yoko Muto, Reiko Ushio, Satomi Shimizu, Rika Ochiai, Michio Ushiyama, Hiromi Kotani

PM-06 - Support System for Preschool-Age Children with Developmental Disabilities and Their Families in Japan

Yui Mizoe, Yasunori Okada, Kiyoshi Otomo

PM-07 - Implementing and Evaluating a Trans-Disciplinary Team Approach to Early Intervention in Singapore

Janice Leong, Kimberly Chew, Pei Yun Chay, Huichao Xie

PM-08 - Quantitative Analysis of Sentence Completion Technique and its Implications

Shuichi Watanabe

PM-09 - The Current Situation of the Short-Stay Service for People with Intensive Medical Care in Japan.

Yuji Iwasaki, Takeshi Miyanomae, Kazuya Goto, Toshihide Shiiki, Noyuri Yamaji, Masanori Tamura

PM-10 - Early Intervention in Naturalistic Environments Using Child and Family Routines—A Paradigm Shift in Delivery of Clinic-Based Intervention in Singapore for Children with Developmental Disabilities

Shang Chee Chong, Mythra Mahesh

PM-11 - Reviewing a Problem of the Long-term Care Insurance for Elderly People in Japan from the ICF

Takehiko Mita

PM-12 - Is WeChat Influencing Policy Making for People with Intellectual and Developmental Disabilities in China?

Mo Chen, Xi-Jie Yang

PM-13 - A Trans-disciplinary and Socio-Ecological Framework to Understand and Evaluate Inclusion Practices in the Workplace

Esther Joosa

PM-14 - Alternative Support Model and Strategies for Promoting Inclusive Education of Hong Kong

Samuel Singyu To, Manyin Lee, Chingwan Fred Ma, Langa Samuelson To

PM-15 - Social Interaction using Objects with Non-Verbal Students

Eiko Tatematsu

PM-16 - Improve Quality of Service for Persons with Disabilities using Online Software

Faisal Iqbal

Track 2. Successful living within communities

PC-01 - Factors Associated with Religious Community Involvement for Mothers of Children with Autism

Naomi Ekas

PC-02 - Longitudinal Profiles of Social Communication in Fragile X Syndrome, Down Syndrome, and Autism Spectrum Disorder

Molly Losh, Lauren Bush, Michelle Lee, Jamie Barstein, Gary E. Martin

PC-03 - Identifying Support Needs of Elderly Caregivers of Clients with Intellectual Disabilities in Supported Employment Services in Singapore

Melissa Teo, Jui Horng Tan, Zetty Akhtar Md Eizak, Esther Lim, Eunice Ho, Jamila Mustaffa

PC-04 - Assistive Technology for Independence Living: Mefacilyta, a Life Skills App for Inclusion of People with Intellectual or Developmental Disabilities

John Owuor

PC-05 - Twitter as a Means to Measure Attitudes towards People with Intellectual Disability

Andreas Kocman, Germain Weber

PC-06 - Concepts of Job Satisfaction in People with Intellectual Disability

Andreas Kocman, Germain Weber

PC-07 - The Assessment of Quality of Life of People with Intellectual Disabilities in Japan-using the Personal Outcomes Scale

Mizuho Tatsuta, Norimune Kawai, Michio Ushiyama

PC-08 - A Development and Evaluation of a Workshop of Disability Awareness Particularly in the Event of Disasters for Primary School Children

Yayoi Kitamura

PC-09 - Group Home for People with PIMD: Current Situation in Tokyo and Hope for Living in Community

Shoko Kihara, Yuji Iwasaki, Hisako Horie, Hiroshi Saiki, Masaaki Yamamoto

PC-10 - Preliminary Reliability Analysis of the Social Impact of Repetitive Behavior Scale

Jennifer Zarcone, Catalina Rey, Noor Javed, Rose Nevill, Eli Newcomb, Griffin Rooker

PC-11 - Community Participation Model for Young Adults with Intellectual and Developmental Disabilities.

Molly Bathje

Track 3. Education in schools and in society

PE-01 - Characteristics of Self-Monitoring Related to Problem-Solving for Adults with Intellectual Disabilities

Fumio Imaeda, Atsushi Kanno

PE-02 - Do Teachers Correctly Assess Students with Behavior and/or Learning Problems in Regular Class?

Rika Ochiai, Daisuke Motoyoshi, Hideyo Goma

PE-03 - A Survey Report on Support Needs and Support Measures for Children with Down's Syndrome in Japan

Sujin Lee, Soichi Hashimoto, Ryo Kumaqai, Chiaki Masu

PE-04 - Research on Vocational Education and Transition Services for Chinese Students with Intellectual Disability in Special Education Schools in Hubei

Juan Tang, Yanli Ding, Tianxi Xu

PE-05 - Changes in the Physical Fitness Profiles of High-School Students with Intellectual Disabilities

Cheng Chen Pan

PE-06 - Preschool Teachers' and Parents' Understanding of Early Childhood Temperament in an Asian Culture – Implications for Child Health and Development

Ying Qi Kang, Charmaine Teo Min, Shen Liang, Shang Chee Chong

PE-07 - The Relationships between Sensory Integration and Academic Skills of School-Age Children with Autism

Phakawan Sutthiwong

PE-08 - Learning Difficulties of Elementary School Children in Inclusive Education in Japan - Research on Children with Suspected Mild Intellectual Disabilities and Learning Disabilities

Saika Sugiura

PE-09 - Supporting the Inner World of Students with Intellectual Disabilities

Shuhei Ogawa, Michio Kojima

PE-10 - Development of Executive Function Learning Management Model to Promote Readiness in Early Childhood with LD and ADHD

Jiraporn Chano

Track 4. Health through the lifespan

PH-01 - Auditory and Speech-Language Development Schedule: A Tool to Detect Hearing Loss in Children with Intellectual Disability

Ansari Mohammad Shamim

PH-02 - Adult Patients with Autism Spectrum Disorders in U.S. Academic Medical Centers

Sarah Ailey, Louis Fogg

PH-03 - Preliminary Study of Self-Esteem and Subjective Well-Being in Persons with Autism Spectrum Disorders

Michio Kojima

PH-04 - Problem Behaviors in Adolescents/Young Adults with Down Syndrome with and without Diagnosed Mental Disorders

Hiroshi Itoh

PH-05 - Disabled Women's Access to Maternal and Child Healthcare in Zambia

Masauso Simon Chirwa

PH-06 - Involvement of Oxytocin and Arginine Vasopressin May Unveil Modulation of Autism Spectrum Disorder

Iaria Cataldo, Gianluca Esposito, Atiqah Azhari

Academic workshops

IASSIDD Academy Workshops

Part of IASSIDD's Asia-Pacific Congress



Monday November 13, 2017, 1:30-4:30 pm
AMBASSADOR HOTEL, BANGKOK, THAILAND

A-1: Special Olympics in Asia

Special Olympics is an exciting international series of events that provides enormous exciting opportunities for people with disabilities. In this interactive workshop, you will learn about the development of Special Olympics, and the positive impact it can have on people's lives. Perhaps most important of all, you will discuss how to create an action plan for Special Olympics with an Asian focus and how a partnership with IASSIDD can help that.

B-1: Recent Advances in Autism

The number of children and adults diagnosed with Autism Spectrum Disorder (ASD) has increased markedly in recent years. Treatment methods have relied heavily on the use of medication and direct training methods, such as Intensive Behaviour Intervention. Now, we are also trying to understand the world from the perspective of the person with ASD. Why does he do the things he does? How does she see things through her eyes? This innovative workshop helps us understand the world of ASD.

A-2: Disasters & Crises

In recent years, countries in Asia and around the world experienced natural disasters. These created crisis situations for large numbers of children and adults with disabilities. In this important workshop, you will learn about disaster situations and how to manage crises that involve people with disabilities. Learning how to be a leader in a crisis is crucial for front-line disability professionals, but also for family members.

B-2: Innovative Research Methods

Quantitative and qualitative research methods are extensively used in the field of intellectual and developmental disabilities. But other innovative methods are increasingly being used. This workshop highlights collaboration between researchers and families / persons with disabilities, and collaboration with policy makers. Participants will learn new sources of data and methods of analyzing data, and will be introduced to interesting new arts-based methods of research.

A-3: Sexuality — Enabling Rights and Choices

This dynamic workshop teaches us ways to enhance the sexual rights and choices of people with intellectual disabilities. It challenges us to include sexuality — not ignore it, as we have often done in the past — as a normal human activity. You will learn ways to begin talking about sexuality, and understand that changing community and family acceptance is essential to enabling sexual rights of people with disabilities. This is a workshop that is essential for all disability professionals and family members.

A-4: Inclusive Education

Including children with special needs in regular classrooms is occurring in most countries of the world. This exclusive workshop focuses on advantages and challenges of inclusive education, and provides helpful advice for teachers and parents. Workshop participants will learn many new ways to improve quality of school life through inclusive practices.

Registration and Payment form on back or below.
Register for full conference at www.Iassidd.org

Site visits

Site Visits

Monday morning November 13, 2017.

Depart from Ambassador Hotel at 8.00 and return to Ambassador Hotel at 13.00 by vans.

Refreshment and lunch will be provided at the visiting sites.

1. **Rajanukul Institute**
Health and Mental Health services for people with disability; including early intervention, therapy services (Physiotherapy, Occupational Therapy), and dental services.
2. **Chulalongkorn University**
Inclusive education (Grade 1 to Grade 12) for children with disabilities in the mainstream Chulalongkorn University Demonstration School; and multidisciplinary practice with medical doctors and therapists supporting teachers.
3. **Sataban Saengsawang Foundation**
Support for adults with disability, including employment services in supported employment, open employment and in social enterprises.

Exhibitors

- 1 The Faculty of Education, Chulalongkorn University
- 2 Rajanukul Institute, Department of Mental Health, Ministry of Public Health
- 3 Special Education Bureau, Ministry of Education
- 4 Association of Parents for Thai persons with Autism
- 5 Association of Parents of persons with Intellectual Disability of Thailand
- 6 Products from disabled children
- 7 The Guidance Association of Thailand
- 8 Sirindhorn National Medical Rehabilitation Institute, Department of Medical Service, Ministry of Public Health
- 9 Department of Empowerment of Persons with Disabilities ,Ministry of Social Development and Human Security
- 10 International Prader-Willi Syndrome Organization (IPWSO)
- 11 Yuwaprasart Waithayopathum hospital, Department of Mental Health, Ministry of Public Health
- 12 Child and Adolescent Mental Health Rajanagarindra Institute, Department of Mental Health, Ministry of Public Health
- 13 Rajanagarindra Institute of Child Development, Department of Mental Health, Ministry of Public Health
- 14 Special Olympics Thailand

Presenter Index

A

Abdullah, Hjh Dyg Norzaiham
 Midawati Hj..... 25
 Abdullahi, Ifrah Hassan 31
 Adams, Dawn 23, 24
 Agosta, John..... 26, 32
 Ailey, Sarah 24, 26, 36
 Akobirshoev, Ilhom 31
 Ali, Afia..... 28
 Allan, Linda 21, 26, 28, 33
 Alnahdi, Ghaleb 22
 Alwis, Anoma 21
 Anderson, Julie 31
 Arvidsson, Per 33
 Attar, Hassan Al 32
 Au, Yim Fong 32
 Aunos, Marjorie 26
 Ayado, Yukari 25
 Azhari, Atiqah 36

B

Baio, Gianluca 29
 Balandin, Susan..... 29, 30, 31
 Bandara, Chamara 23
 Barron, Diana Ruth Andrea 28
 Barstein, Jamie..... 35
 Basterfield, Cathy..... 31
 Bathje, Molly..... 26, 35
 Bigby, Christine 22
 Blackman, Laurel E..... 32
 Bonardi, Alexandra 22, 26
 Bould, Emma..... 22
 Bradley, Valerie..... 22, 31
 Brown, Ivan..... 25, 30
 Bull, Rebecca..... 25
 Bush, Lauren 35

C

Cainelli, Stefano 29
 Carey, Eileen..... 22
 Carey, Greg..... 30
 Cataldo, Ilaria 36
 Chan, Jeffrey 23, 26, 27, 31, 32
 Chan, Man-Chee..... 24
 Chan, Tsun Kit 32
 Chano, Jiraporn 36
 Chay, Pei Yun..... 34
 Cheausuwantavee, Tavee 22
 Chen, Mo..... 28, 29, 35
 Chew, Kimberly 34
 Chirwa, Masauso Simon 30, 36
 Chiu, Chun-Yu..... 25, 31
 Chong, Ning Xin..... 25
 Chong, Shang Chee 34, 36
 Chou, Yueh-Ching 29, 32
 Chow, Tak Hung 32
 Chun Wai Chan, Trevor 27
 Chun-Fan Lai, Edward..... 21
 Chung, Michele 32
 Claes, Claudia 27, 28
 Cocks, Errol..... 23, 24, 26
 Collings, Susan..... 26
 Cooney, Erin 26
 Cooper, Sally-Ann..... 21, 26, 28, 33
 Courtenay, Ken..... 27, 29
 Crabb, Caitlin..... 24
 Crosbie, Jenny 23
 Cuzzillo, Celeste..... 21, 22

D
 Dahlgren, Ulrika 28
 Dahlman, Erik 28
 Daniel, Matthew 24
 De Maeyers, Jessica 26

De Schrijver, Maarten..... 26
 den Houting, Jacqueline 23
 Densiriaksorn, Premvadee..... 27
 Deveau, Roy..... 22, 29, 31
 Dew, Angela..... 26
 Ding, Yanli..... 36
 Dissanayake, Cheryl..... 25
 Dore, Helene..... 26
 Dowse, Leanne 26
 Doyama, Aki 23, 25
 Duncan, Alexandra Katherine..... 22

E

Edwards, Meaghan 28
 Eizak, Zetty Akhtar Md 35
 Ekas, Naomi 29, 35
 Esposito, Gianluca 29, 36

F

Fang, Felicia Yann Yann 29
 Faragher, Rhonda 26
 Feldman, Maurice..... 26
 Finlayson, Janet 29, 33
 Fogg, Louis..... 36
 Frawley, Patsie 27, 29, 30
 Funaya, Hiroo 22, 28
 Fung, Wai Ying Emily 32
 Furuta, Hiroko 25

G

Gadow, Friederike 23
 Glencross, Sarah 24
 Goll, Harald H. 31
 Goma, Hideyo..... 34, 36
 Gomathy, Veeramari 33
 Gopi, Dilani 23
 Goto, Kazuya 34
 Grace, Emma 30

Graves, Jillian23
Gwee, Ai Jia26

H

Hagiliassis, Nick.....21
Hagiliassis, Nick.....22
Handoyo, Restu.....28
Hashimoto, Soichi 24, 25, 36
Hassan, Amani24
Hassiotis, Angela 28, 29
Hawach, Abdul Hakim Hasan26
Hayashi, Akiko..... 23, 25
Hayes, Susan Carol.....26
Hedley, Darren..... 23, 25
Heller, Tamar 22, 24, 26
Henderson, Angela 21, 28, 33
Hettiarachchi, Shyamani23
Ho, Eunice.....35
Horie, Hisako.....35
Hosokawa, Kaori23
Hsieh, Kelly.....22
Hsu, Chao-Fu.....31
Huang, Hsin Pei34
Hudson, Colin.....32
Humphreys, Lincoln22
Hunter, Rachael29

I

Iacono, Teresa.....22
Ikeda, Tomomi34
Imade, Daisuke34
Imaeda, Fumio36
Inoue, Kazuhisa34
Iqbal, Faisal35
Itoh, Hiroshi36
Iwasaki, Yuji 34, 35

J

Javed, Noor35
Jawawi, Rosmawijah 22, 26
Joosa, Esther 30, 33, 35

K

Kang, Ying Qi 36
Kanniga, Devi..... 33
Kanno, Atsushi 36
Karni-Vizer, Nirit.....29, 32
Kato, Toshihiro 34
Katsikitis, Mary..... 24
Kawai, Norimune..... 35
Kawaike, Junya 23
Keen, Deb23, 24
Kihara, Shoko 35
Kim, Jiyeon 26
Kimiya, Satoshi 30
Kinnear, Deborah 21, 26, 28, 33
Kishore, Manisha..... 26
Kitamura, Yayoi34, 35
Kitnasamy, Gopi 23
Knox, Marie21, 23, 25
Ko, Chiou Shiue 34
Koay, Teng Leong22, 25
Kocman, Andreas 35
Koh, Shine 25
Kojima, Michio 22, 24, 25, 36
Koritsas, Stella.....21, 22
Korsman, Susan 28
Kotani, Hiromi 34
Kouimtsidis, Christos..... 29
Kröger, Teppo.....29, 32
Kumagai, Ryo.....24, 25, 36
Kumara, Shantha..... 27
Kwok, Henry 19

L

Langdon, Peter E. 24
Larkan, Fiona 29
Lau, Vincent..... 29
Lee, Manyin..... 35
Lee, Michelle 35
Lee, Sujin 36

Lee, Yvonne 26
Lei, Jianghua 33
Leitch, Sarah 31
Leong, Janice 34
Leong, Koay Teng..... 26
Li, Henan..... 27
Li, Jing 21
Liang, Melanie Jiamin 28
Liang, Shen 36
Liew, Chloe 23
Lim, Esther 35
Lim, Hoili..... 26
Lindsay, Lorraine 32
Liu, Yonglun 30
Loh, Eva Wei-Lyn 31
Loh, Sau Cheong 23
Lombardi, Marco 28
Losh, Molly 35

M

Ma, Chingwan Fred..... 35
MacPherson, Lorna..... 33
Maeda, Mariko 25
Magaña, Sandra..... 27
Magana, Sandy 29
Magiati, Iliana 28
Mahesh, Mythra 34
Mahmod, Syazwina 22
Makupa, Victor 33
Manokara, Vimallan 26, 27, 31
Marsack, Christina 23, 24
Martin, Gary E. 35
Martin, Jeffrey 25
Märtsin, Mariann..... 23, 25
Maruo, Natsumi 34
Mason, Jonathan 24
Masu, Chiaki 23, 25, 36
Matsubasa, Tadashi..... 30
Matzin, Rohani 26
McConnell, David 26

McCowan, Colin	21
McDonnell, Andrew	22
McGill, Peter	29
McGillivray, Jane	21, 23
McGinley, Jennifer	21
McPherson Carrie L.....	23
McSkimming, Paula.....	21
McVilly, Keith	23
Min, Charmaine Teo	36
Mita, Katsumi.....	30
Mita, Takehiko	35
Mitra, Monika	31
Miura, Takuya	23, 24
Miyanomae, Takeshi.....	34
Mizoe, Yui	34
Morales, Miguel.....	27
Morrison, Jill	21, 26, 28, 33
Moss, Simon	21
Motoyoshi, Daisuke	36
Murfitt, Kevin.....	31
Murthy, Sumithra	22
Mustaffa, Jamila.....	35
Muto, Yoko	34

N

Nagase, Osamu	33
Nakachi,Muneyuki	22
Nakao, Ayaka	22, 28
Neuman, Ran	24
Nevill, Rose	35
Newcomb, Eli.....	35
Ng, Jing Yi.....	26
Ng, Rachel	31
Nishan, Fathmath	26
Nizam, Nurafizzah Hj Muhd Khairun	25

O

O'Brien, Patricia	21, 23
Ochiai, Rika	34, 36

Ogawa, Shuhei	36
Okada, Yasunori	34
Okon, Marian	21
Ong, Natalie	29, 30
Osugo, Martin	26
Otomo, Kiyoshi.....	24, 34
Owen, Randall	24
Owuor, John	29, 35

P

Pacheco, Laura	26
Paju, Birgit Johanna.....	22
Palanivel, Manikandan	34
Pan, Cheng Chen	36
Pang, Jee Ching	23, 29, 30
Papadopoulos, Nicole	21
Parish, Susan	27, 31
Parmenter, Trevor.....	21, 23
Penchaliah, Sivananda	26
Perera, Bhathika.....	29
Persons, Donald	24
Pooh, Karen.....	27
Poon, Kenneth.....	25, 26, 29
Poquerusse, Jessie	29
Prain, Meredith.....	23
Proyer, Michelle	30

Q

Qureshi, Adnan	27
----------------------	----

R

Raghavendra, Pammi	30
Rajagopal, Aariyapillai Reena	34
Ratanapairoj, Panida	30
Razak, Salim Jeffrey.....	27
Redgrove, Fiona	29
Reiter, Shunit	24
Rey, Catalina.....	35
Richdale, Amanda	25
Rieck, Murray	23, 25
Rillotta, Fiona	30, 32

Rinehart, Nicole	21
Roberts, Jacqueline	23
Rooker, Griffin	35
Rose, John	24, 32
Ross, Kevin.....	21
Roth, Dana.....	25

S

Sadek, Susan	24
Saiki, Hiroshi	35
Salmons, Brian	24
Samuel, Preethy	25
Santoso, Harri.....	22
Schalock, Bob	28
Schalock, Robert L.	27
Schippers, Alice	30
Scior, Katrina	28, 29
Setoh, Peipei.....	29
Shackell, Philip James	26
Shakespeare-Finch, Jane	23, 25
Shamim, Ansari Mohammad .	22, 36
Shamra, Fathima	23
Sherriff, Andrea	33
Shiiki, Toshihide.....	34
Shimizu, Satomi	34
Shimoda, Hironobu.....	23, 24
Sidhu, Dalvin Jit Kour	26
Simpson, Kate.....	23, 24
Singh, Nirbhay N.	23
Skouteris, Helen	21
Smith, Peter.....	23
Soeradja, Zainal Abidin	22
Spencer, Margaret.....	26
Spoor, Jennifer	25
Srisilapanan, Patcharawan	32
Stodden, Robert A.	32
Su, Hui	24
Suemitsu, Shigeru.....	34
Sugioka, Chihiro.....	24, 25
Sugiura, Saika	36

Sun, Wen.....31
 Sun, Yumei31
 Suttachitt, Narutt..... 30, 32
 Sutthiwong, Phakawan36

T

Talib, Hasinira Binte33
 Tamaki, Suguru22
 Tamura, Masanori.....34
 Tan, Clara26
 Tan, Jui Horng35
 Tan, Peter.....26
 Tanaka, Emiko Nagaoka22
 Tanaka, Shun.....34
 Tang, Juan 33, 36
 Tatematsu, Eiko35
 Tatsuta, Mizuho35
 Tay, Yu Ping.....25
 Taylor, Susan Elizabeth31
 Teo, Grace.....33
 Teo, Melissa35
 Thomson, Allyson..... 23, 24, 26
 Thoresen, Stian23
 Thoresen, Stian H..... 24, 26
 To, Langa Samuelson35
 To, Maggie19
 To, Samuel Singyu35
 Tomsic, Gail..... 29, 30
 Tong, Katherine.....24
 Tritiphen, Somsri.....29

Tung, Yi Ning 31

U

Uljarevic, Mirko 25
 Unwin, Gemma 32
 Ushio, Reiko 34
 Ushiyama, Michio.....34, 35

V

Vandenbussche, Hanne.....26, 28
 Vazquez, Alena32, 33
 Venuti, Paola 29
 Vermilä, Piret Elina..... 25
 Vindevogel, Sofie..... 27

W

Walker, Ruth 30
 Wang, Kuo Yu 32
 Wang, Kuo-Yu.....21, 23
 Wang, Mian26, 27
 Wang, Tiffany 31
 Wang, Yu-Ju..... 32
 Watanabe, Shuichi29, 34
 Watanabe, Takahiro24, 25
 Watson, Joanne.....29, 30, 31
 Weber, Germain..... 35
 Wei, Ker-Chiah 28
 Weisz, Arlene 24
 Whitehouse, Andrew 21
 Wiczorkowski, Vanda Anne 26
 Williams, Katrina 21

Williams, Valerie..... 24
 Wilmot, Mathilda 25
 Wilson, Erin E..... 31
 Wolowicz-Ruszkowski, Agnieszka 30
 Wong, Chris Tak Wee 28
 Wong, Meng Ee 30
 Wong, Shyh Shin..... 26
 Wong, Suet Ming..... 30

X

Xie, Huichao..... 25, 34
 Xu, Jiacheng 27
 Xu, Tianxi 33, 36
 Xu, Yue..... 29

Y

Yamaji, Noyuri 34
 Yamamoto, Masaaki 35
 Yang , Xi-Jie..... 35
 Yeo, Wendy 33
 Yu, Li-Chi..... 31

Z

Zabidi bin Abdul Razak, Ahmad ... 23
 Zarccone, Jennifer 35
 Zazzi, Hannah 27
 Zhang, Dalun..... 28
 Zin, Hjh Rohani Hj Mat..... 25
 Zin, Rohani Mat 22

Support Organizations



Local host organizations

- 1 Rajanukul Institute, Department of Mental Health, Ministry of Public Health
- 2 The Faculty of Education, Chulalongkorn University
- 3 Department of Empowerment of Persons with Disabilities, Ministry of Social Development and Human Security
- 4 Asian Institute of Technology (AIT)
- 5 Association of Parents for Thai persons with Autism
- 6 Association of Parents of persons with Intellectual Disability of Thailand
- 7 Child and Adolescent Mental Health Rajanagarindra Institute, Department of Mental Health, Ministry of Public Health
- 8 Chulalongkorn University Demonstration School
- 9 Faculty of Medicine, Chulalongkorn University
- 10 Faculty of Medicine, Ramathibodi Hospital, Mahidol University
- 11 Ratchasuda College, Mahidol University
- 12 Special Education Bureau, Office of the Basic Education Commission
- 13 Special Olympics Thailand
- 14 The Guidance Association of Thailand
- 15 World Health Organization Country Office for Thailand

Sponsors

Tourism Authority of Thailand
 Government Savings Bank
 Advance Info Service Public Company Limited

IASSIDD 15th World Congress 2019 Announcement



IASSIDD World Congress 2019
Glasgow, Scotland
6-9 August 2019

**See You in
Glasgow**

6-9 August 2019
SECC Glasgow, Scotland

**PEOPLE
MAKE
GLASGOW**
peoplemakeglasgow.com

The poster features a vibrant pink background with a collage of Glasgow images. On the right, a tall, ornate church spire (Glasgow Cathedral) rises above the city skyline. Below it, the modern, curved roof of the SECC Glasgow is visible. The River Clyde flows through the center. In the bottom right corner, the 'PEOPLE MAKE GLASGOW' logo is displayed in white, with the website address 'peoplemakeglasgow.com' underneath.

IASSIDD 5th Europe Congress 2018 Announcement



Diversity & Belonging:

Celebrating Difference

Call for papers open, deadline January 7th 2018

Athens, Greece

Wednesday **18 July** – Friday **20 July 2018**

Tuesday 17 July 2018: IASSIDD Academy pre-conference workshops

Saturday 21 July 2018: Post-conference day for parents, persons with disabilities & practitioners

Venue:	Divani Caravel hotel, Athens
Local convenors:	Association of Parents Guardians and Friends for Persons with Autism Larissa, Greece
More information:	www.iasidd.org

Mark your Calendars